

Pro-Lite 450

Targeted Wavelength LED Exposure Lamp

Description

450W 405nm exposure system

Application

Designed to efficiently expose screen printing stencils

Characteristics

- High intensity with even illumination
- Instant start to full power
- 10,000 hour lifetime rated
- Works with all one & two part emulsions, and stencil films
- Efficient low cost replacement for expensive metal halide systems

Features/Benefits

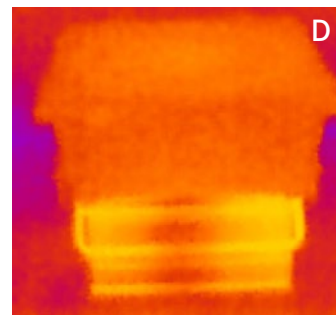
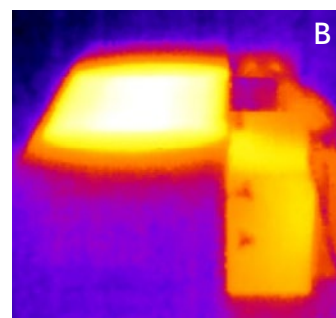
- Optimum wavelength for fast exposure, deep cure & wide latitude
- Runs cold, glass stays cool and no extra A/C load
- Constant light output, no photocell/filter/light integrator calibration needed, just a simple timer
- 85V-265V rated and works with any 110V outlet

Recommended Usage

- Use at a minimum of 24" distance for even exposure of one 23x31 or 25x36 screen.
- Use at a minimum of 36" distance for even exposure of two-up 23x31 or 25x36 screens.

Specifications

- Dimensions: 13"L x 15"W x 16.5"H
- Weighs 28.65 lbs.
- Uses 110v standard wall outlet



A: Metal Halide Lamp

B: Metal Halide Heat Output

C: Pro-Lite 450 Lamp

D: Pro-Lite 450 Heat Output