

TEXTIL[®] CAPILLARY FILM

Fast Exposing Capillary Film for Textiles

DESCRIPTION

Fast exposing red capillary film for use when printing plastisol, water-based & discharge inks. Exposes approximately 8 times faster than diazo based capillary films, and easy to reclaim. Post exposure recommended for use with water-based & discharge inks.

Product	Thickness	Color	Recom. Mesh
TCF-30	30 µm	Red	110-305

FILM STORAGE

Opened and unopened rolls or sheets of film should be stored at temperatures of less than 80°F for maximum shelf life.

HANDLING THE FILM

The film should be handled under low wattage tungsten or yellow fluorescent lighting. The film should be returned to the container after cutting off the required length. Do not kink the film as this could affect adhesion to the mesh. The film should be handled wearing light cotton or lint-free gloves to avoid contact with the emulsion surface. Do not allow the film surface to come in contact with water.

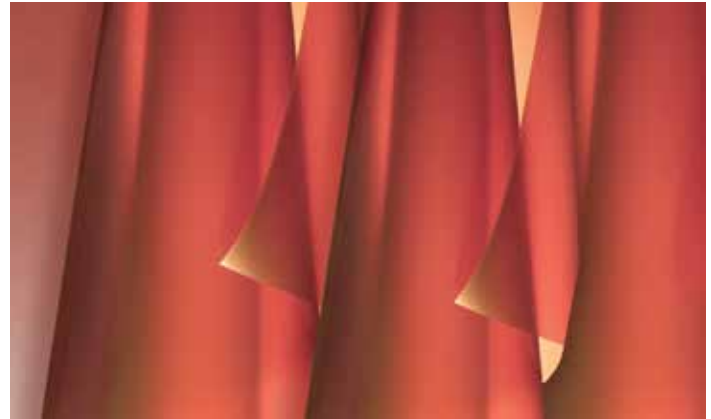
MESH PREPARATION

All new mesh should be abraded vigorously on the printing side with SAATI Direct-Prep 1 before use. SAATI Direct Prep 2 should be used to provide an even water break and to improve adhesion.

ADHERING TO THE MESH

Large and small screens: Cut the film to size and place the film on a dry, flat surface. Roll the film, emulsion side out, around a plastic tube leaving approximately 1" unrolled. Spray the mesh with water and wipe the excess water from the perimeter of the frame to avoid water drops running into the adhered film. Contact the rolled film leading edge onto the top of the wet vertical screen and unroll the film down the screen, thus adhering it to the mesh. Remove excess moisture from the inside of the screen with a light weight window squeegee. Wipe excess water from the perimeter of the frame with an absorbent cloth then proceed to drying.

Small screens only: Place the film, emulsion side up, on a raised pad and lay the dry degreased screen on top. Using a hand spray water bottle, spray water onto the mesh until the film is completely wet. Squeegee off the excess water from the inside of the screen. Wipe water from the perimeter of the frame, then proceed to drying.



DRYING THE SCREEN

The screen can be dried with cold or warm air, maximum 100°F. Thorough drying is essential for optimum results. When the support has been peeled off, continue drying for a few minutes to ensure the film is completely dry. Drying should be in either dark or yellow light conditions.

STORAGE OF SCREENS

After applying the film to the screen and drying, the screens can be kept in the dark for up to a week before exposure, provided that reasonable temperature and humidity conditions are maintained. If storage of the screens is anticipated, it is recommended that the backing sheet is not removed until the screen is about to be exposed.

EXPOSURE

Textile Capillary Film exposes eight times faster than conventional diazo sensitized capillary film as a guideline. It is always recommended to perform a stepped exposure test to determine optimum exposure. The most convenient method is to perform test exposure with Saati 21-step sensitivity guide. Optimum exposure when using a film positive holds solid step 7 after developing. Aim for step 6 when using any type of computer to screen (CTS) equipment.

DEVELOPING

Spray both sides of screen with approximately 80°F water spray to start washout. The majority of spray should be done from the printing side until image is completely defined. Finish washout by spraying inside of screen to remove any stencil residue.

POST-EXPOSURE

Post expose the screen if you are printing with water-based inks. After drying, place the stencil back in front of exposure lamp for 2-5x the original exposure. Alternatively the screen can be exposed to sunlight. Post exposure does not affect reclaiming.

RECLAIMING

After printing scrape excess ink from screen and then clean stencil with Remove IR18 or IR26. Rinse screen then strip stencil with ready to use Remove ER5 or diluted Remove ER2, ER6, or ER10 according to instructions included with product. Remove ghost image with a second application of Remove IR18 or IR26 followed by high pressure wash. For stubborn stains it is necessary to apply a caustic haze remover such as Remove HR3, HR9, or HR12 and follow the product working instructions.