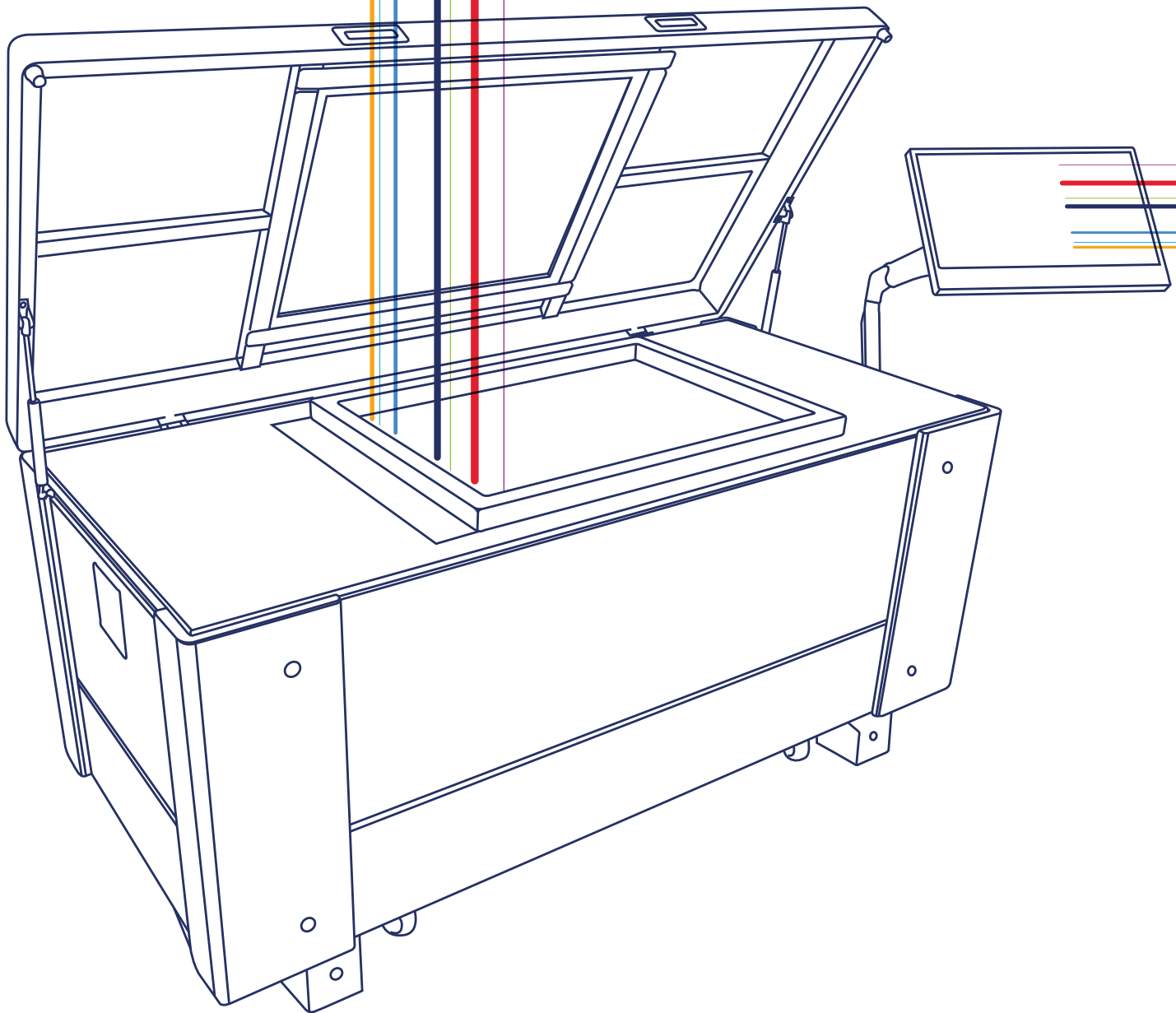


LTS 6080

The Advanced Direct Laser CtS
Imaging & Exposure System

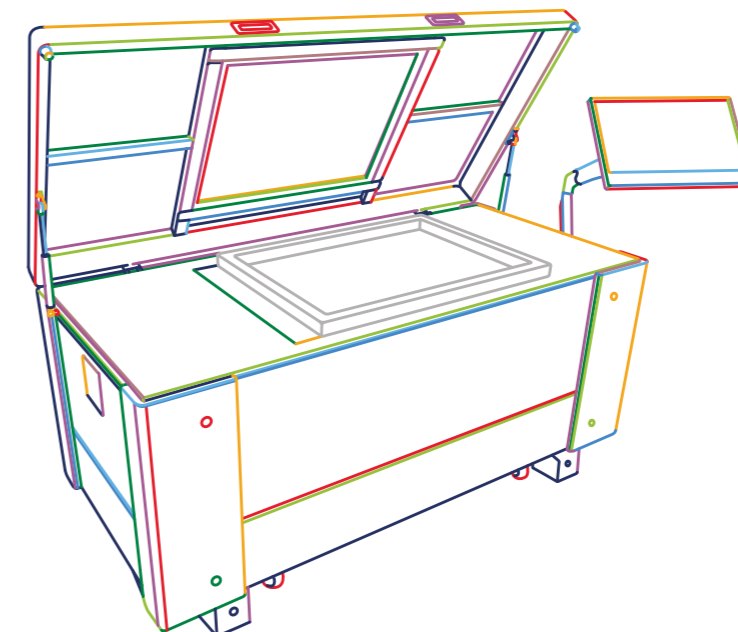


—SAATI

We cross-innovate

Table of Contents

| | |
|-------------------------------|----|
| Introduction | 02 |
| Features | 04 |
| Physical Specifications | 06 |
| Laser Characteristics | 08 |
| Workflow Capabilities | 10 |
| Software Capabilities | 16 |
| Alternative LTS Models | 24 |



We cross-innovate

The LTS Series: Introducing State of the Art Laser Stencil Making from SAATI

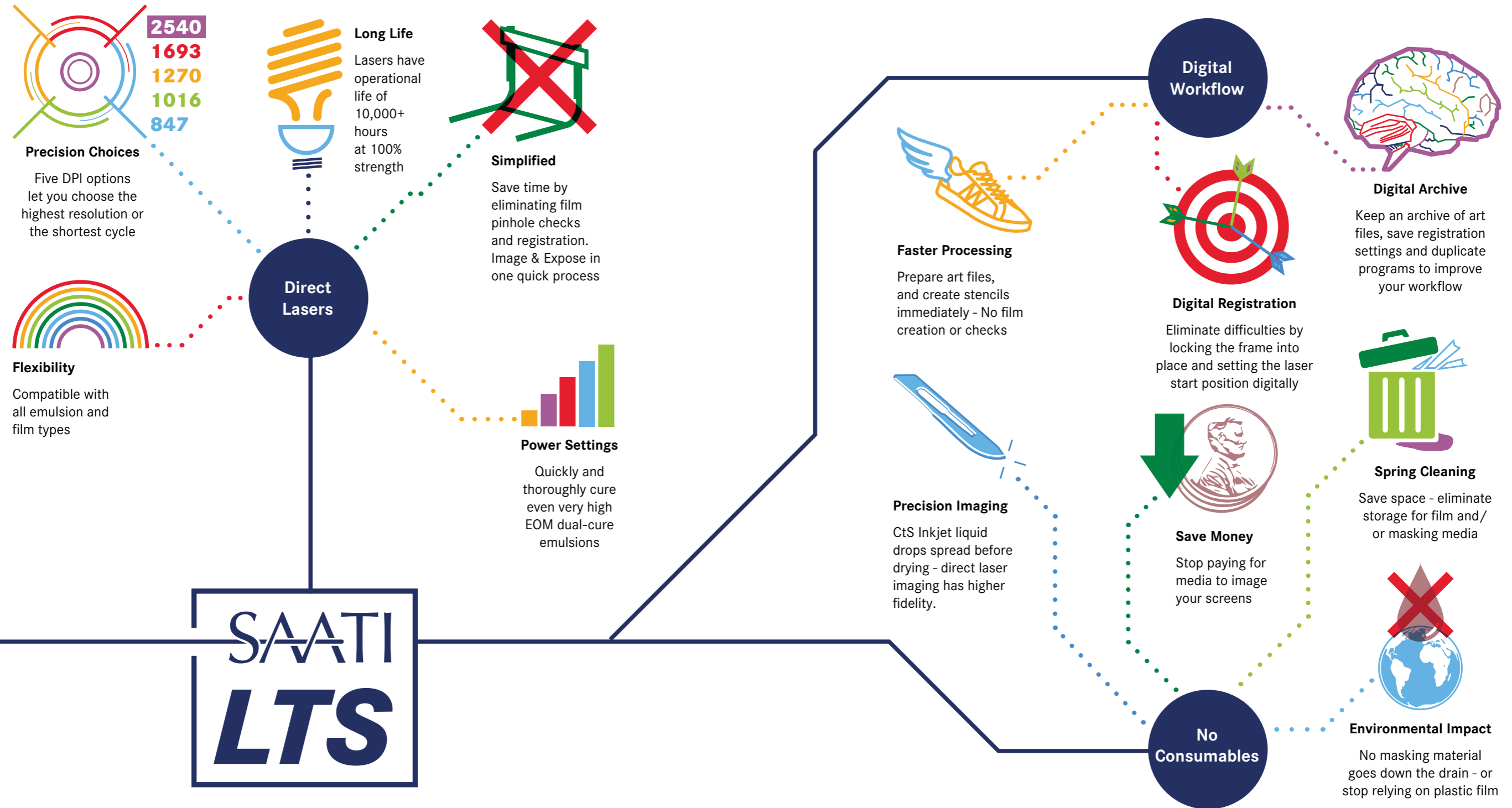
SAATI has decades of experience in the manufacture and distribution of precision woven meshes, emulsion and chemicals. Knowledge that we have gained from our customers has been compiled, analyzed and applied to produce a full range of screen making equipment, and yet the jewel of this collection is undoubtedly the LTS Series.

The SAATI LTS range takes into account the contemporary needs of stencil makers with an eye towards future challenges that will demand more efficient and precise results. SAATI LTS machines are Direct Laser CtS Image & Exposure units. They surpass the results of other CtS systems, and simultaneously provide enhancements to time and money spent producing stencils, as well as reducing your ecological footprint.



SAATI LTS 6080

Features

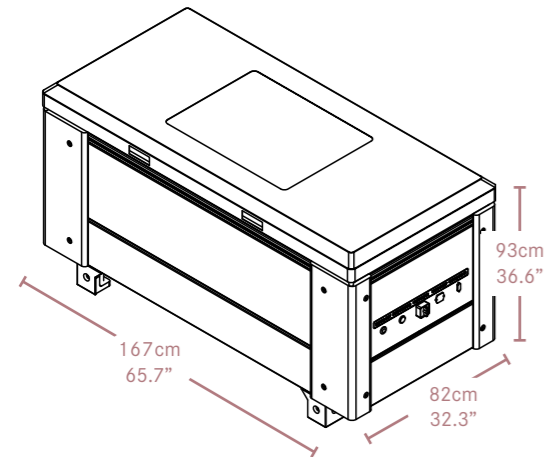


SAATI LTS 6080

Physical Specifications & Characteristics



Dimensions

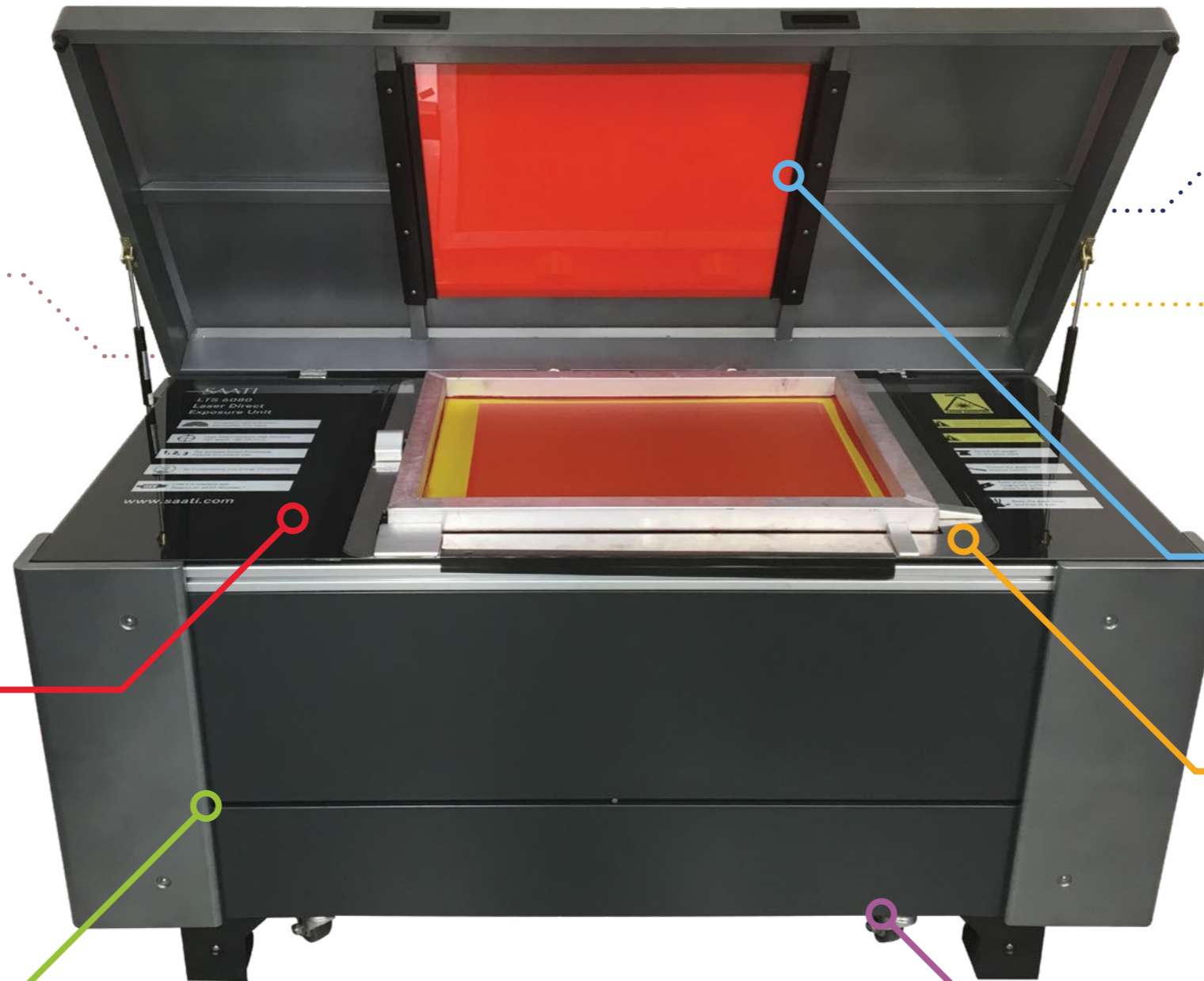


Characteristics

Facedown glass panel with enclosing lid

Maximum Single Frame Size:
85 x 110 cm | 33.5 x 43.3"

Solid metal construction provides a vibration free stencil making platform



Weight



Power



110V
standard

240V
with adapter

350W
consumption

Safe Viewing Window for observing exposure program progress

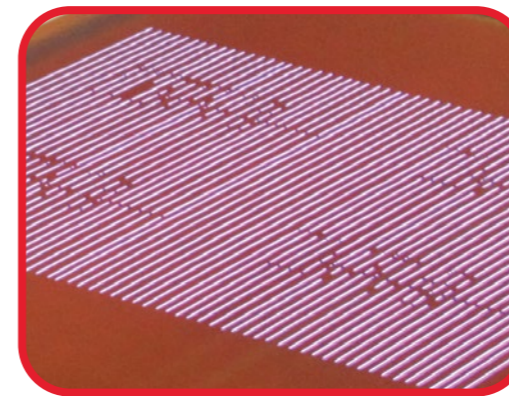
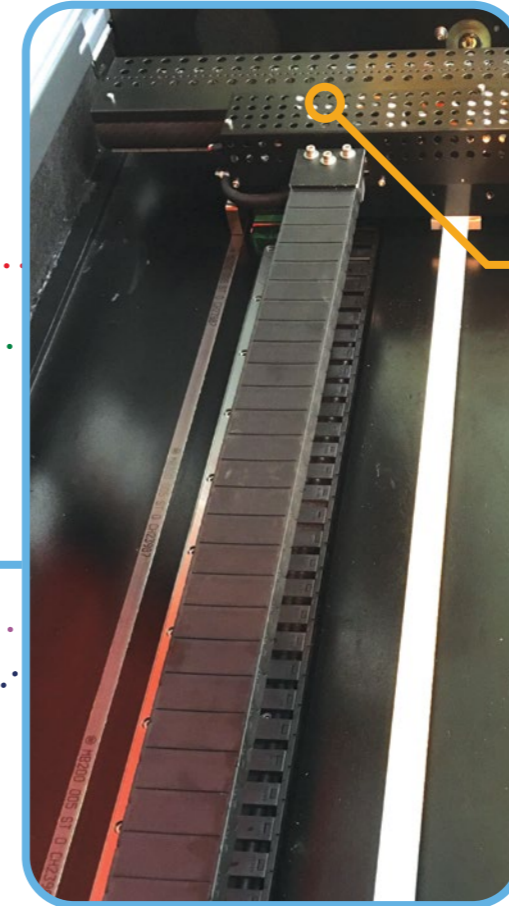
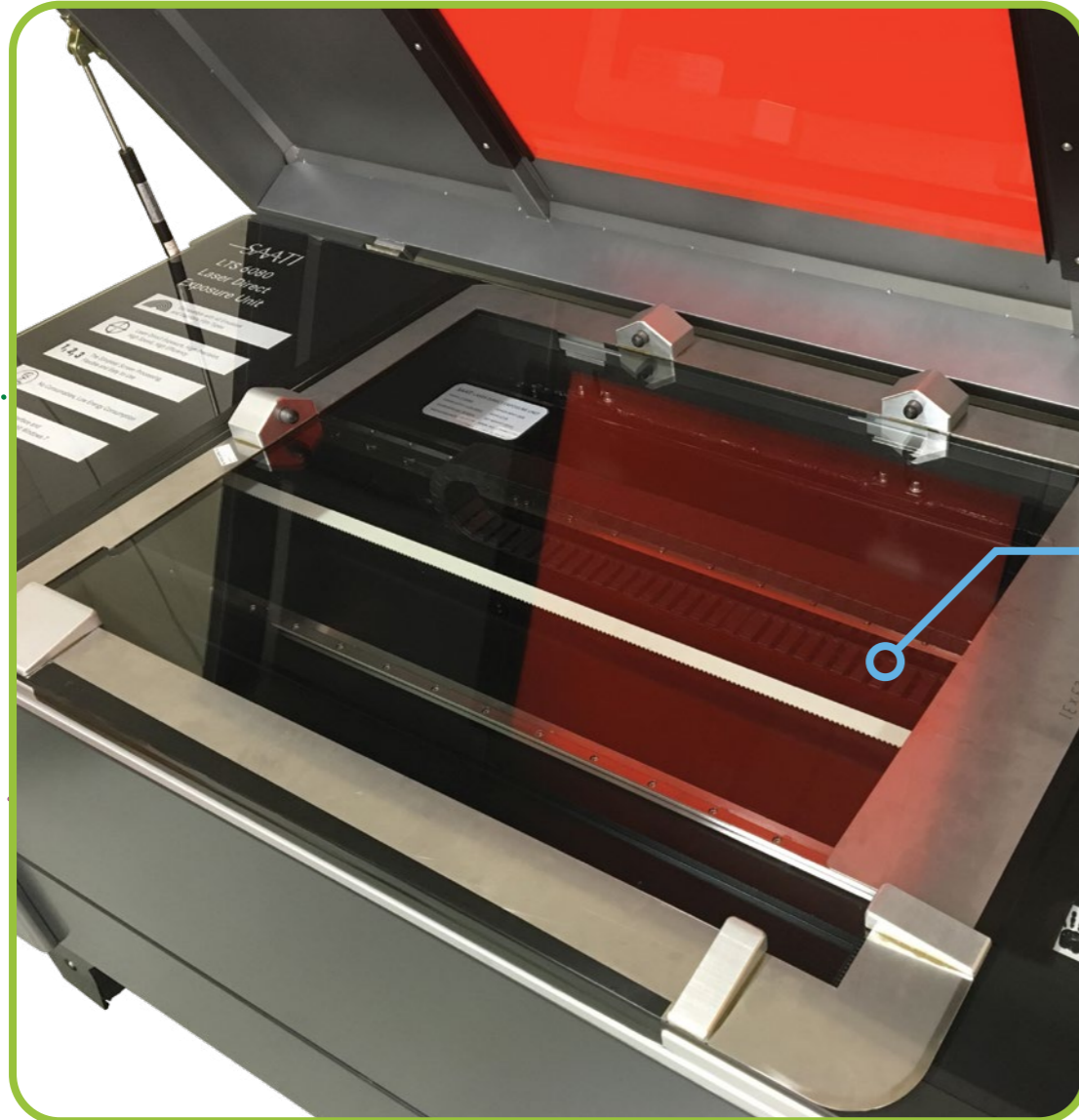
Adaptable to various types of screen registration systems

Maximum Single Image Size:
60 x 80 cm | 23.6 x 31.5"

Solid casters and slim build allow easy movement through standard doorways for unit placement

SAATI LTS 6080

Laser Characteristics



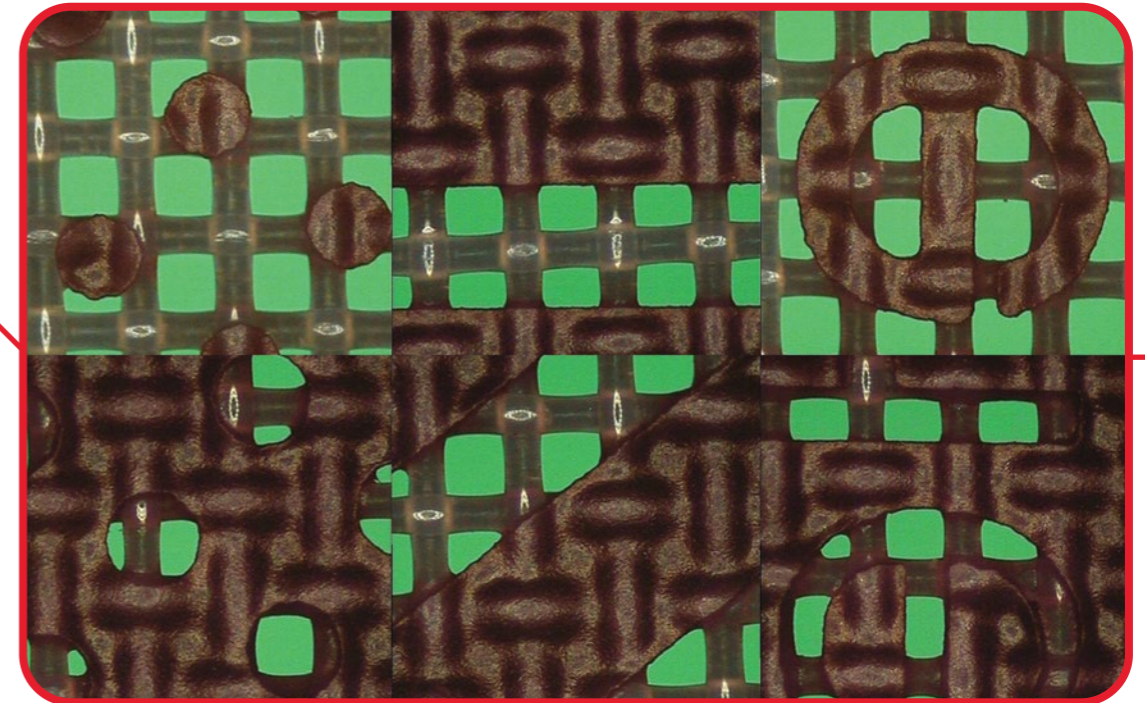
- Array of 96 Blu-Ray Lasers on a linear belt driven head, the system is durable and requires minimal maintenance
- The targeted light wavelength of the lasers maximizes curing speed and minimizes both power consumption and heat generation
- LED Lasers last 10,000+ hours with 100% efficiency



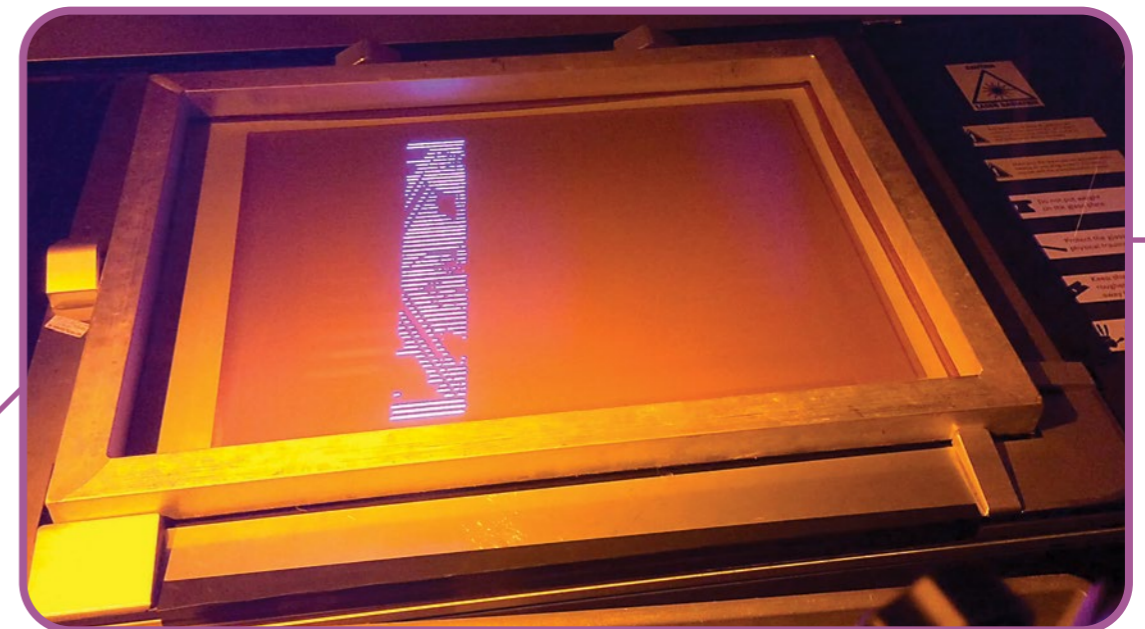
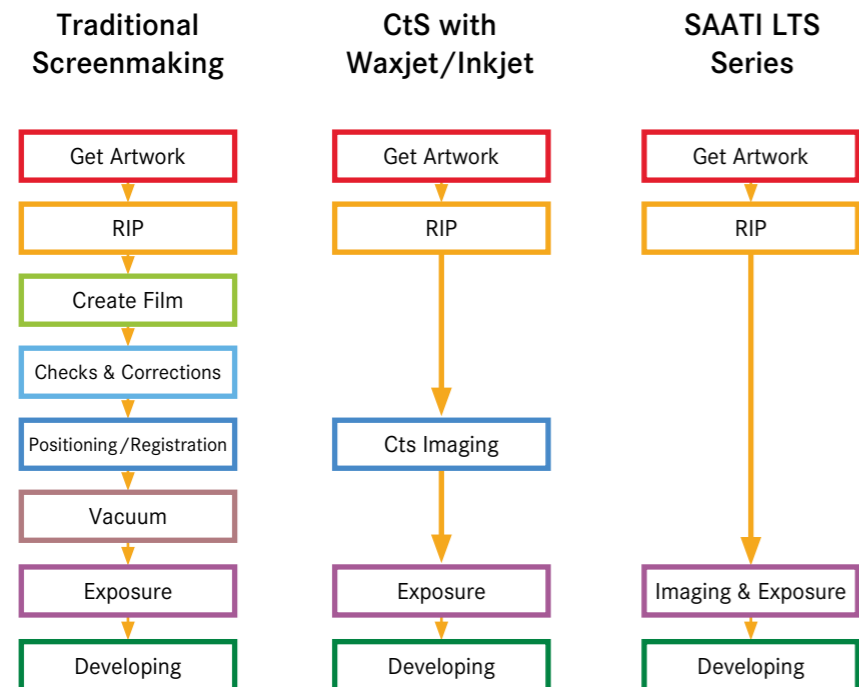
Resolution Settings

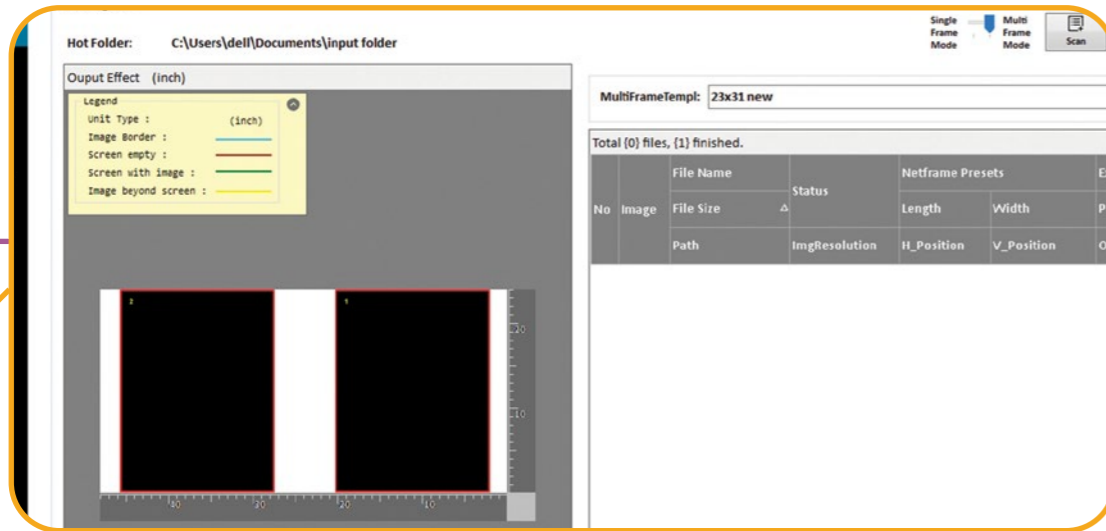
The SAATI LTS has five resolution settings, each tailored to a different type of image requirements

| | | | | |
|--|---|---|---|---|
| <p>847</p> <p>Low Setting</p> <ul style="list-style-type: none"> • Fastest processing times • Superior to inkjet films | <p>1016</p> <ul style="list-style-type: none"> • Superior to inkjet/waxjet resolution | <p>1270</p> <p>Middle Setting</p> <ul style="list-style-type: none"> • Equivalent to DLE systems | <p>1693</p> <ul style="list-style-type: none"> • Superior to many other DLE systems | <p>2540</p> <p>Highest Setting</p> <ul style="list-style-type: none"> • Image setter quality for the most demanding applications |
|--|---|---|---|---|

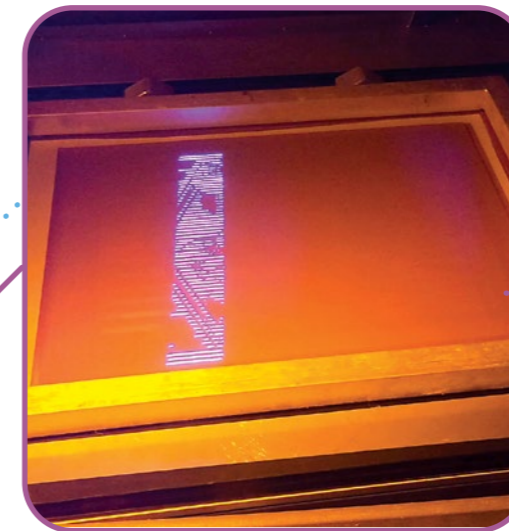
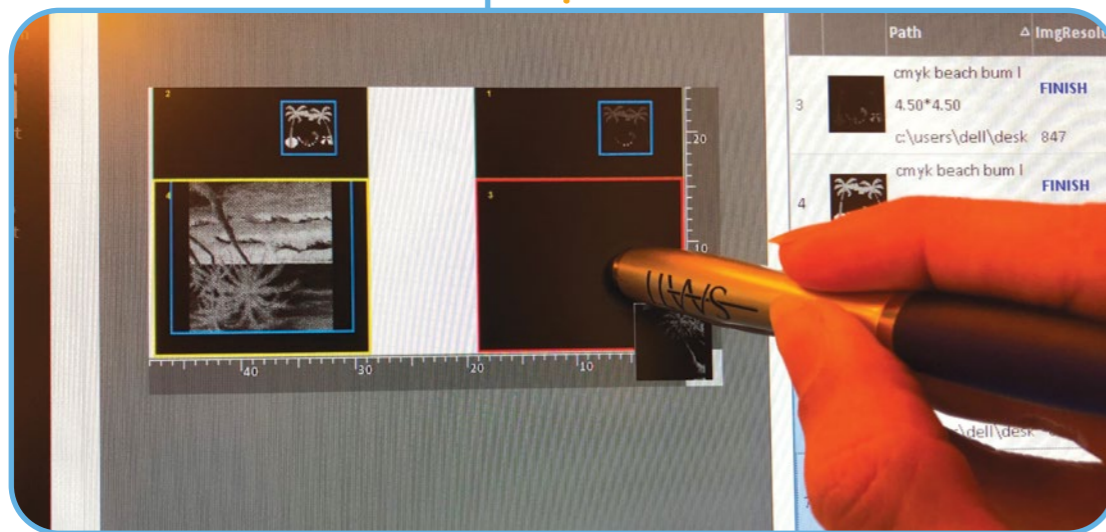


Improvements to Workflow

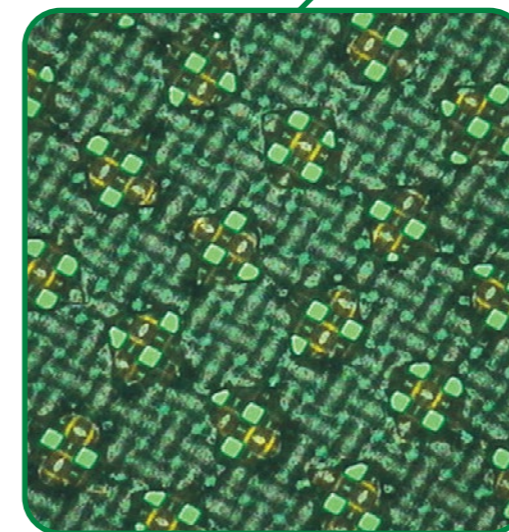




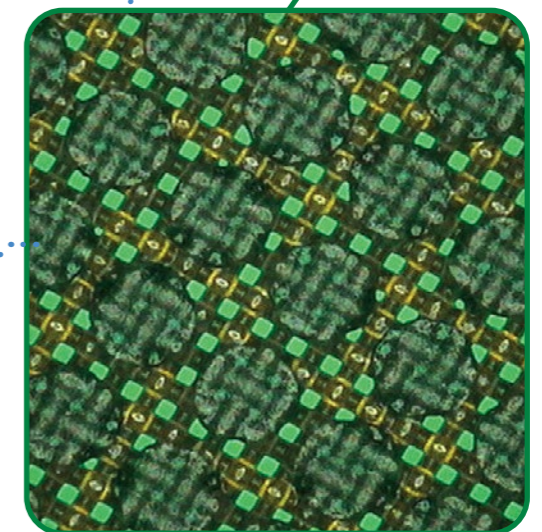
Precision placement of multiple art files across two screens



Laser array exposes images much more quickly than scrolling chip DLE or ink/waxjet that require subsequent exposure



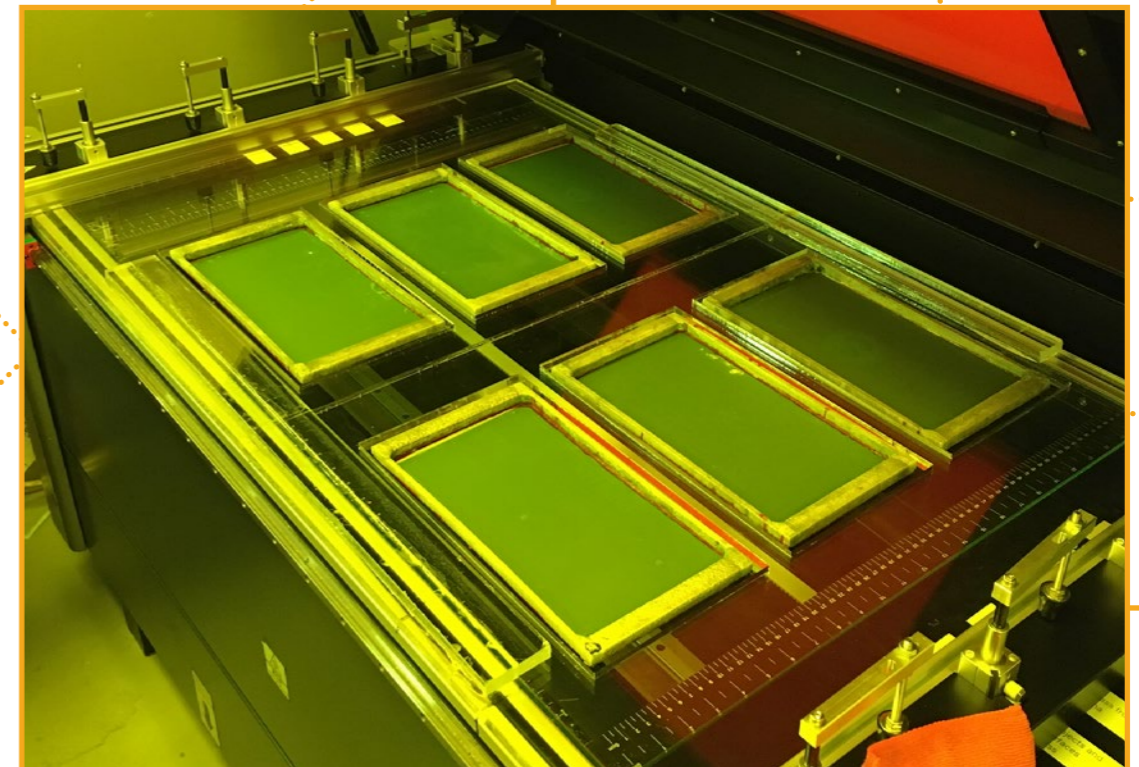
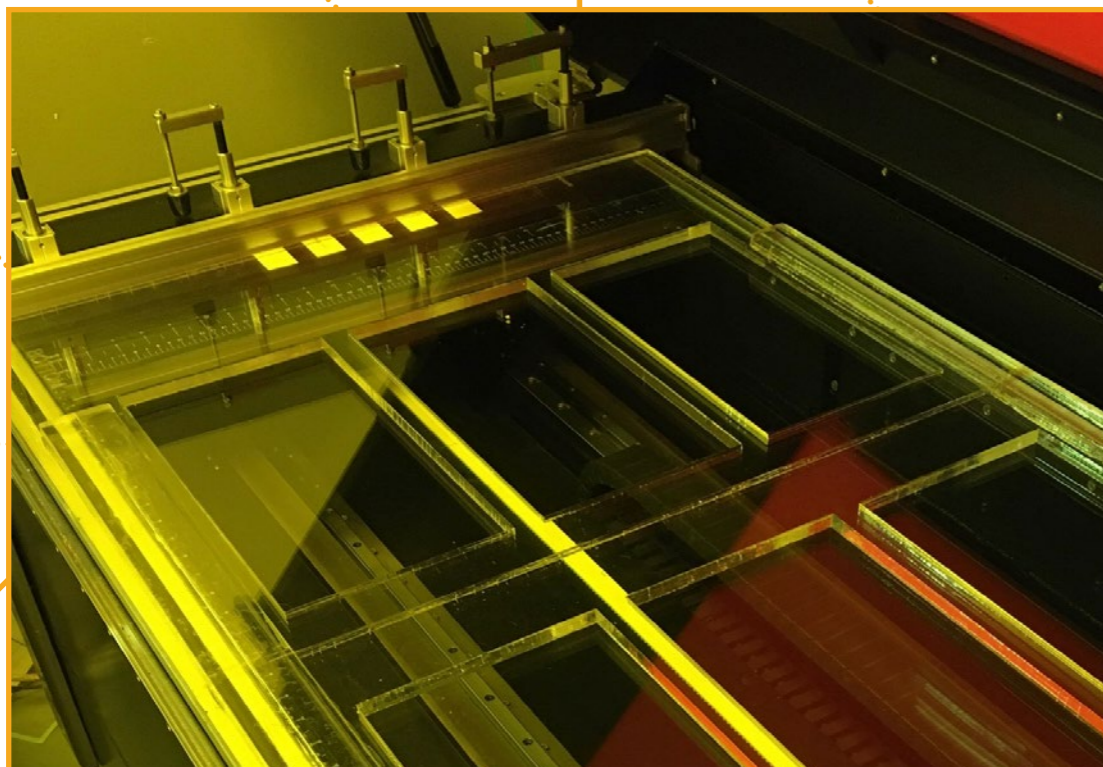
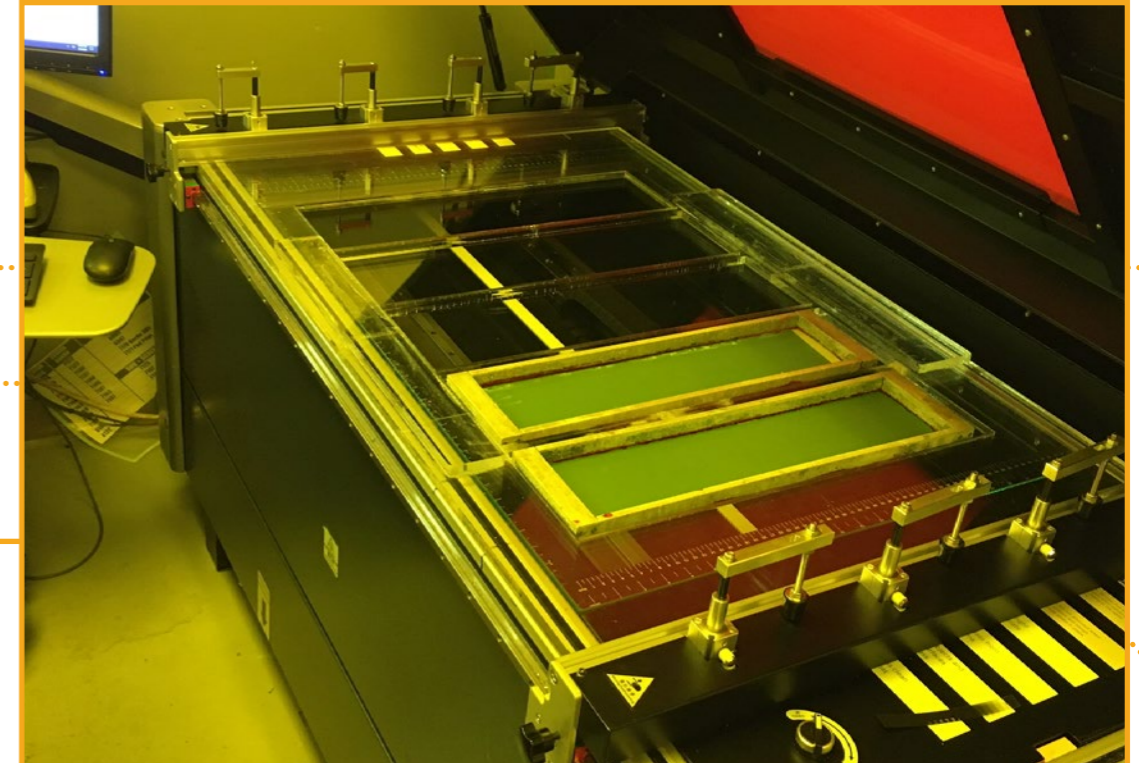
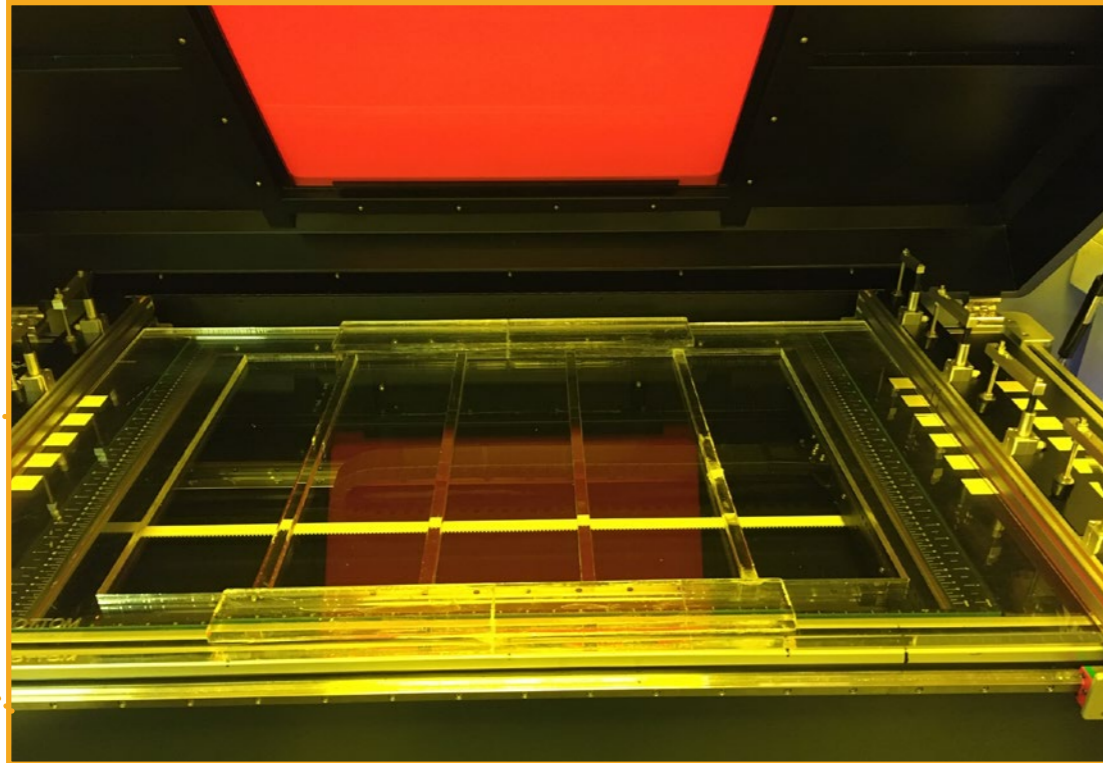
120 LPI 40% dot on 380.31 YE



120 LPI 60% dot on 380.31 YE

SAATI LTS 6080

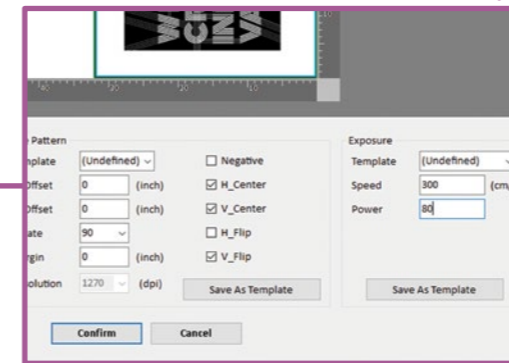
Workflow Capabilities - Multi Screen Registration





User Friendly Layout System

- Set size & location of image(s) and define exposure area
- Place multiple stencil images across 1 or more screens with touchscreen or mouse
- Finalized layouts go to queue for easy work management



Exposure System

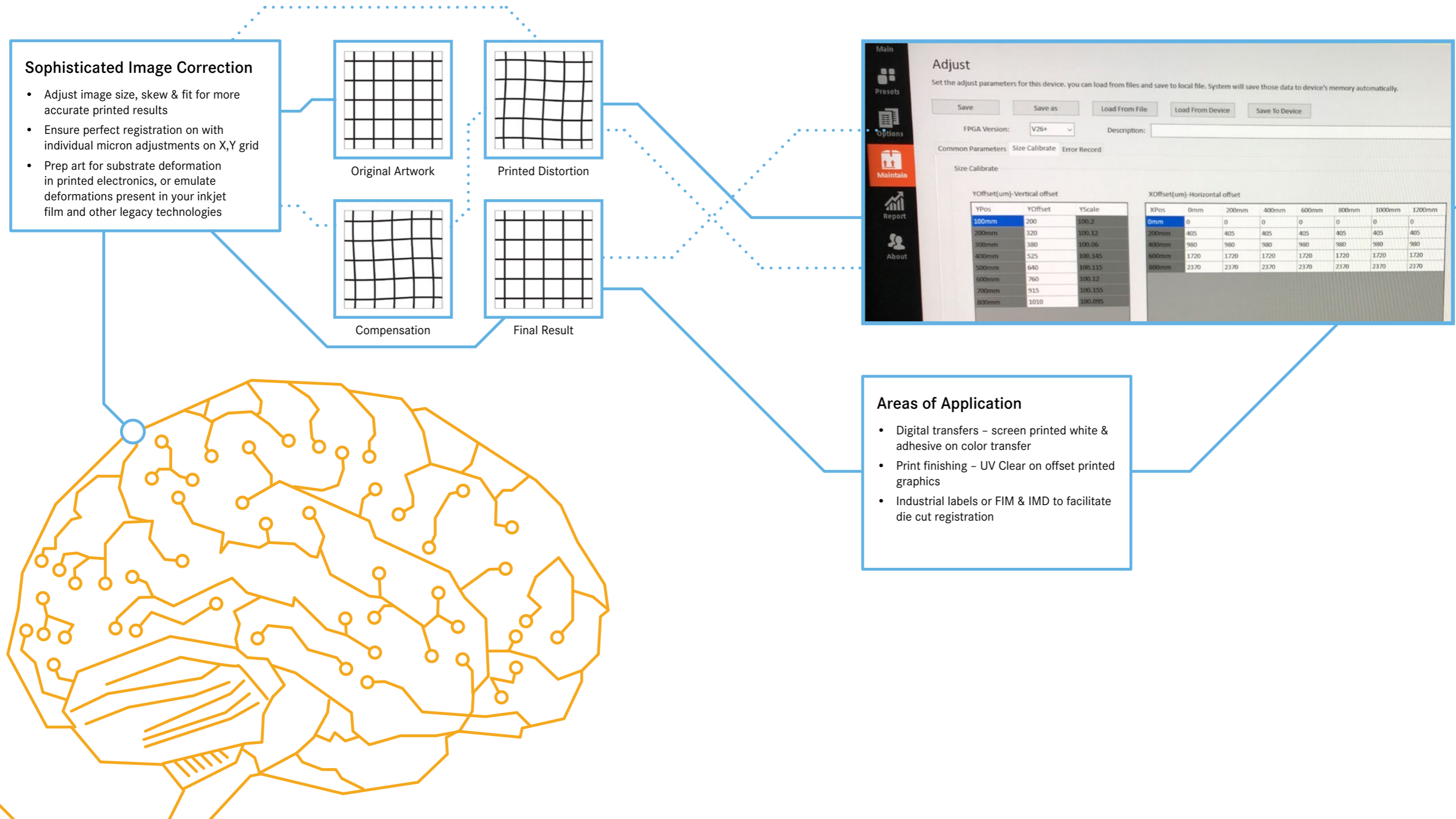
- Set the laser power and scan speed to effectively and thoroughly cure all emulsion and film types in under 3:00
- Customize settings and/or create standard templates for future use
- Proprietary file naming system automatically loads Netframe, Image Pattern & Exposure settings (not required)

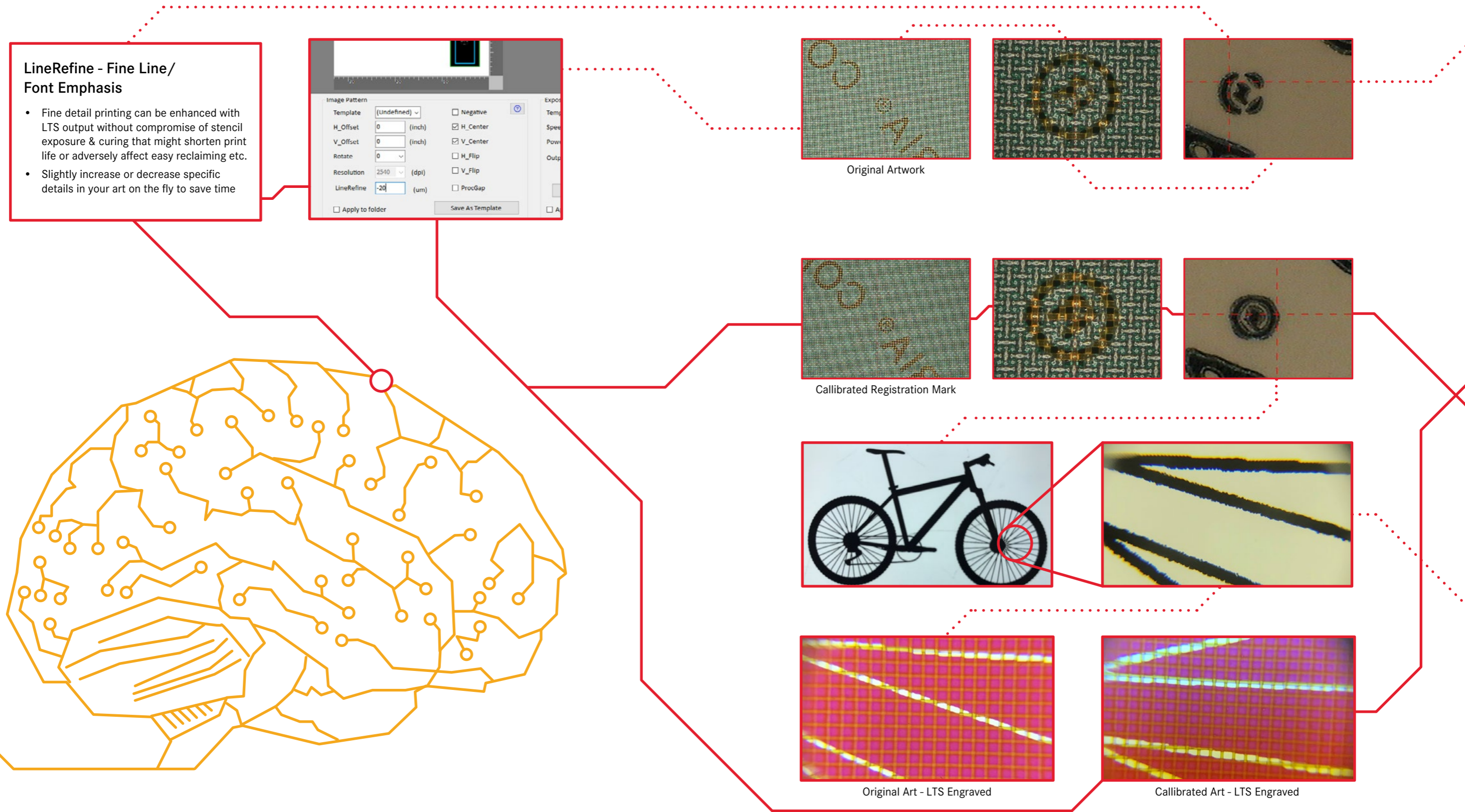
| Power | Speed | Resolution | FrameLength | Exposures | Offset | Offset |
|-------|-------|------------|-------------|-----------|--------|--------|
| 30 | 200 | 2540 | 308 | 435 | 30.8 | 0 |
| 30 | 200 | 1270 | 385 | 435 | 0 | 0 |
| 300 | 200 | 1270 | 385 | 435 | 0 | 0 |
| 300 | 300 | 1270 | 385 | 435 | 0 | 0 |
| 30 | 300 | 2540 | 762 | 508 | 0 | 0 |
| 30 | 200 | 1270 | 762 | 508 | 0 | 0 |
| 30 | 200 | 1270 | 762 | 508 | 0 | 0 |
| 30 | 300 | 1270 | 762 | 508 | 0 | 0 |
| 30 | 200 | 1270 | 762 | 508 | 0 | 0 |
| 30 | 200 | 1270 | 762 | 508 | 0 | 0 |
| 30 | 20 | 1270 | 762 | 508 | 0 | 0 |
| 30 | 20 | 1270 | 762 | 508 | 0 | 0 |
| 30 | 20 | 3890 | 762 | 508 | 0 | 0 |
| 30 | 20 | 1270 | 762 | 508 | 0 | 0 |
| 30 | 200 | 1270 | 800 | 900 | 0 | 0 |

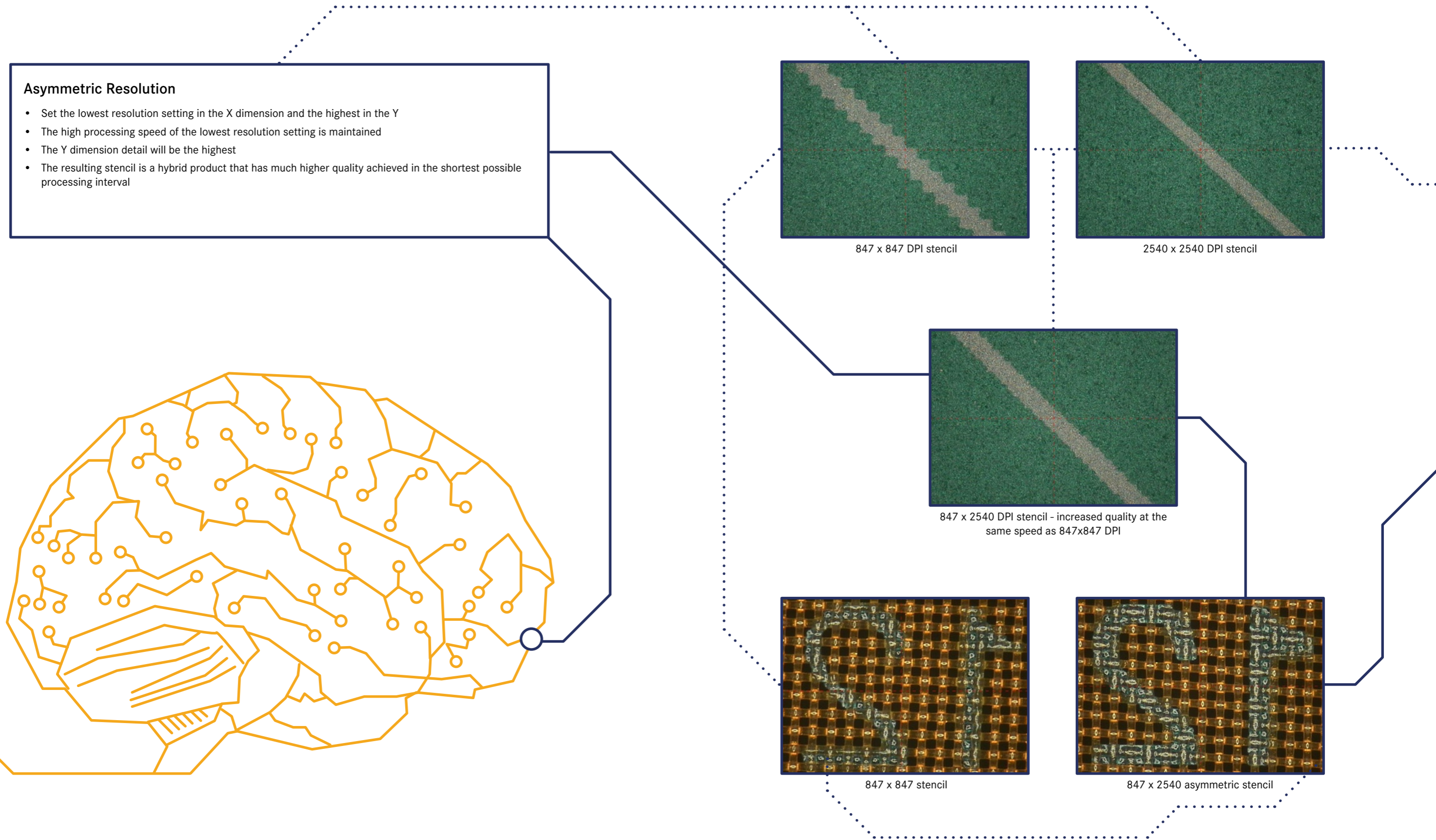
Create Your Own Archive

- Processed files settings are saved
- After screen imaging, layouts go to designated folder for archiving or deletion
- Create your own file archive for easy retrieval through the search function









SAATI LTS 6080

Alternative LTS Models



LTS Vertical Series

- Vertical Designs with glass-free frame holder, minimizes pinholes & touchup
- Expose one or two larger frames at once
- Convenient space saving footprint compared to traditional exposure methods



| Machine | LTS 6080-VF | LTS 8012 | LTS 1015 |
|------------------------------|---|--|---|
| Number of Lasers | 96 | 128 | 160 |
| Resolution (dpi) | 847 - 1016 - 1270 - 1693 - 2540 | | |
| Dimension | 220 x 58 x 163 cm 86.6 x 22.8 x 64" | 220 x 58 x 163 cm 86.6 x 22.8 x 64" | 260 x 68 x 200 cm 102.4 x 26.8 x 78.7" |
| Weight | 850 kg / 1874 lbs | 925 kg / 2039 lbs | 1200 kg / 2646 lbs |
| Maximum Image Size | 60 x 120 cm 23.6 x 47.2" | 80 x 120 cm 31.5 x 47.2" | 100 x 150 cm 39.4 x 59.1" |
| Maximum Frame Size (Single) | 104 x 167 cm 41 x 66" | 115 x 167 cm 45 x 66.0" | 140 x 200 cm 55 x 79" |
| Maximum Frame Sizes (Double) | 58 x 78 cm 23 x 31" | 64 x 91 cm 25 x 36" | 64 x 91 cm 25 x 36" |
| Power Consumption | 800 W | 800 W | 1000 W |
| Voltage | 110/240 V | | |
| Interface | USB 2.0 | | |
| Process Mode | Bi-Directional | | |
| Stencil Materials | Most kinds of emulsion & film | | |
| Maximum Emulsion Thickness | 700 µm | | |
| Repeatability | Less than 0.1 mm | | |
| Sample Exposure Settings | Fabric Type Saatilene Hi-R 120.34 (305.34) Color: Yellow Power: 50 Emulsion: SAATIgraf CTS7 EOM: 9 µm DPI:1270 Speed: 300 SAATI 21-Step Exposure Level: Step 5 Time: Less than 3.5 Minutes | | |

We cross-innovate

**SAATI S.p.a**

Via Milano, 14
22070 Appiano Gentile (Co), Italy
Tel : +39 0319711
Fax: +39 031 933392
E-mail: info.it@saati.com

SAATI Americas Corp.

201 Fairview St. Extension
Fountain Inn, SC 29644
Toll-Free: +1 800 431 2200
Fax: +1 864 862 0089
E-mail: info.us@saati.com

SAATI Technical Fabrics (Tianjin) Co., Ltd.

Cross Of Saida 2nd Branch Road and Saida Century Avenue,
Xiqing Economic Development Area,
Tianjin, China 300385
Tel: +86 22 23960843
Fax: +86 22 23962116
E-mail: info.cn@saati.com

SAATI Deutschland GmbH

Ostring 22 46348 Raesfeld, Germany
Phone: +49 2865 95800
Fax: +49 2865 958010
E-mail: info.de@saati.com

SAATI Korea Ltd.

22, Dangjeong-ro, Gunpo-si Gyeonggi-do, 435-833, Korea
Phone: +82 31 429 9337
Fax: +82 31 429 9338

SAATI France

74 Route de Bapaume 80360 Sailly Saillisel, France
Phone: +33 3 22 85 77 00
Fax: +33 3 22 85 77 00
E-mail: info.fr@saati.com

SAATI Serigrafía Ibérica, S.a.

Pol. Ind. El Mijares, C/ Industria, nº 13 12550
Almazora, Castellón, Spain
Phone: +34 964550688
Fax: +34 964551049
E-mail: info.es@saati.com

SAATI Russia

23 Shvetsova str. 198095 Saint-Petersburg, Russia
Phone: +79 062788343

Website

www.SAATI.com

v 05.11.20

—SAATI
We cross-innovate