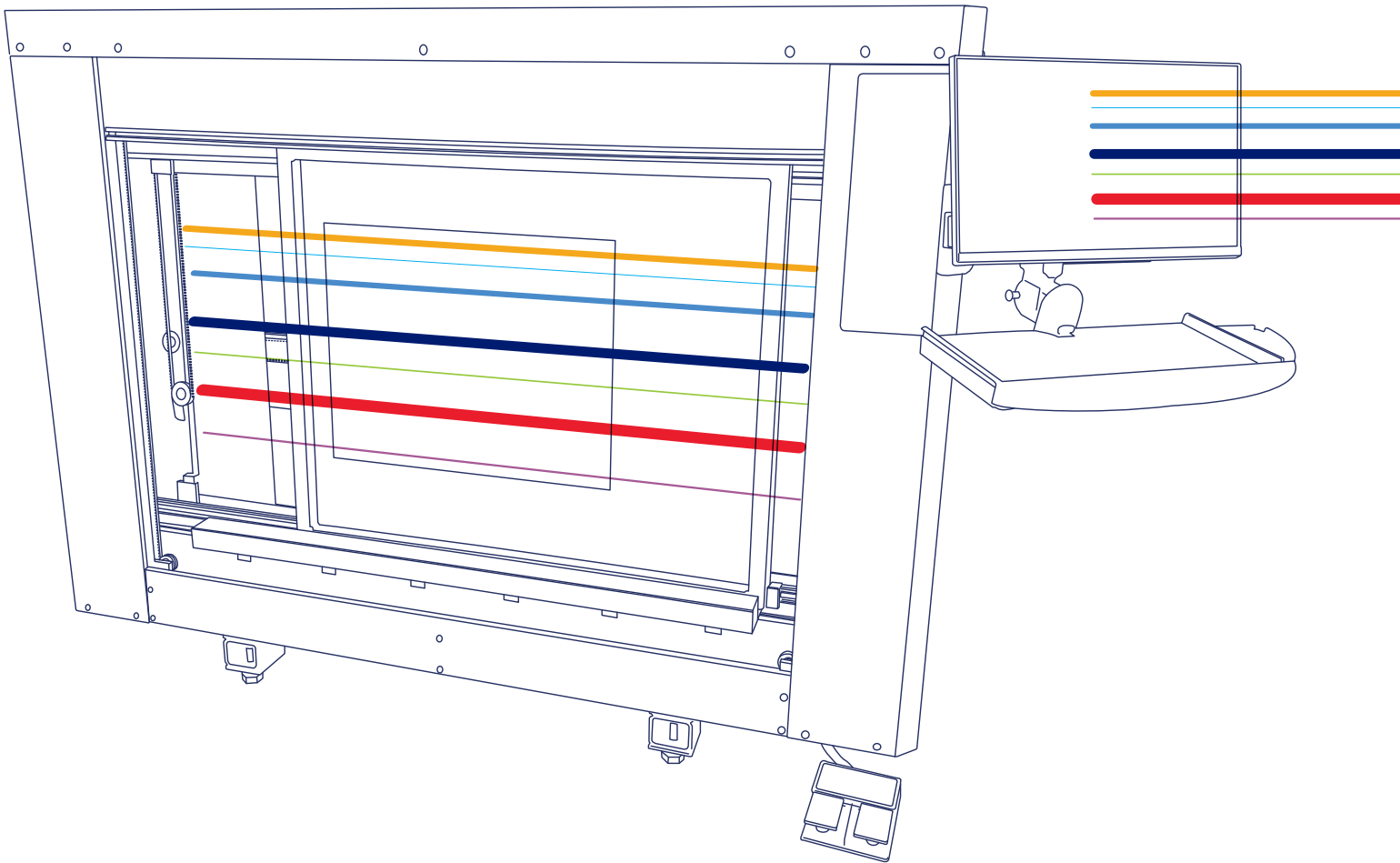


# LTS 6080-VF

The Advanced Direct Laser CtS Imaging & Exposure System

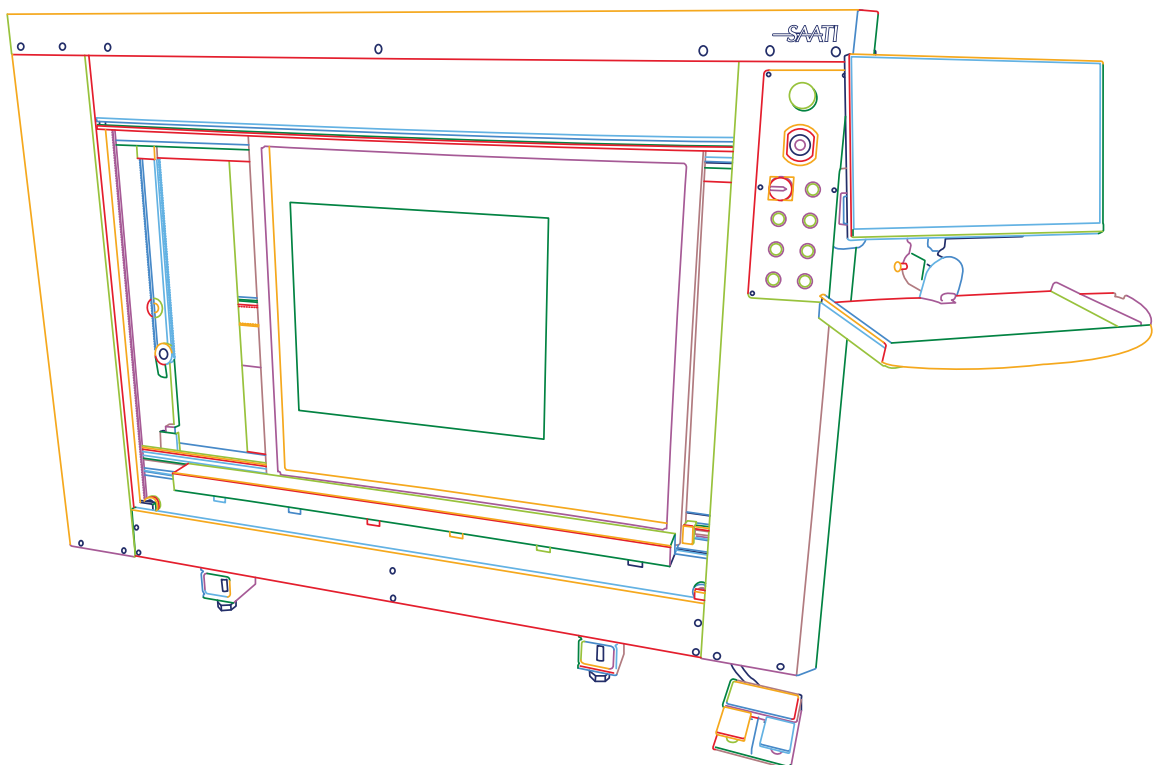




**We cross-innovate**

## Table of Contents

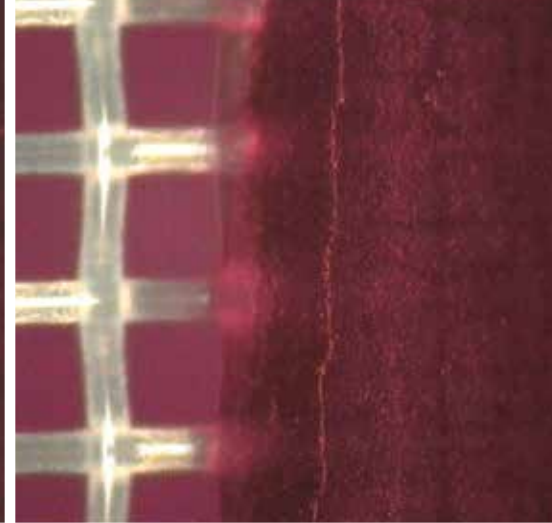
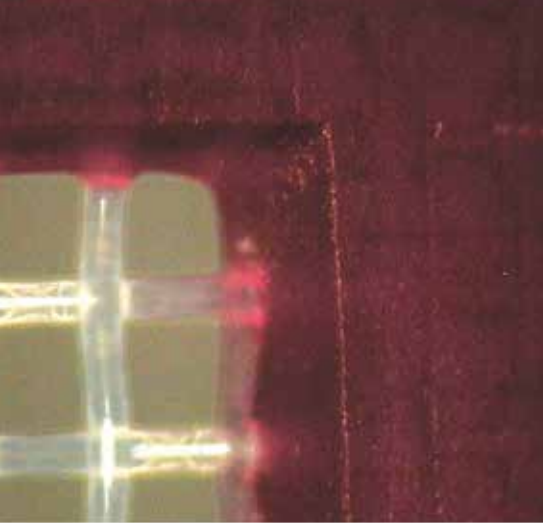
Introduction .....	02
Features .....	04
Physical Specifications .....	06
Laser Characteristics .....	08
Workflow Capabilities .....	10
Software Capabilities .....	14
Other LTS Models .....	16



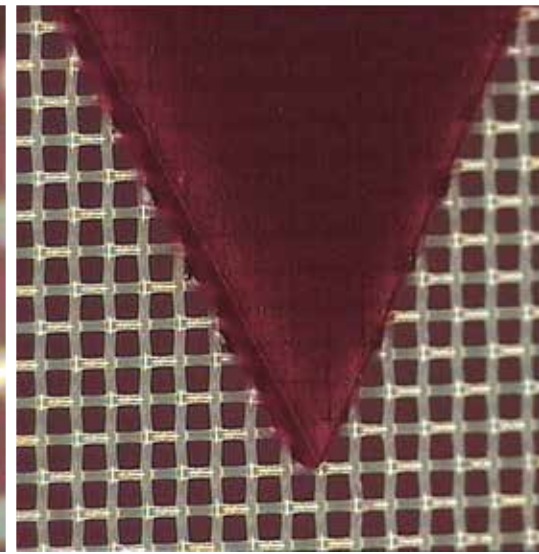
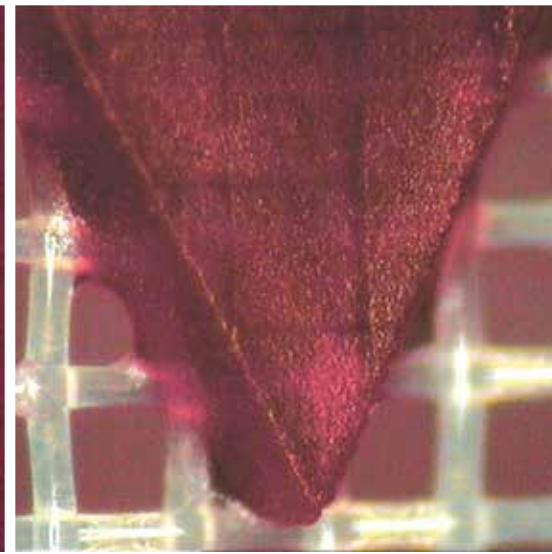
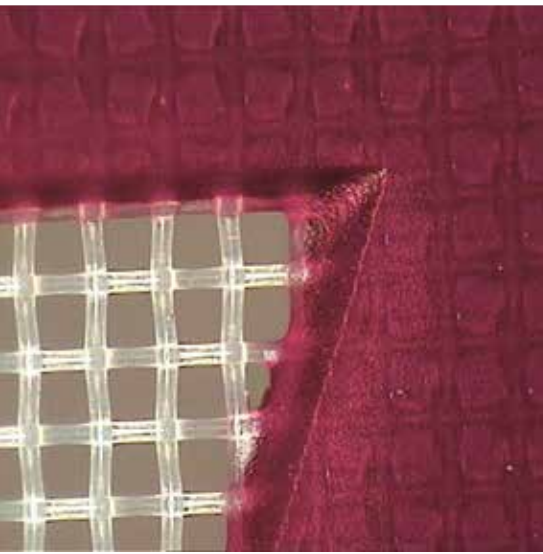
# The LTS Series: Introducing State-of-the-Art Laser Stencil Making by SAATI

SAATI has decades of experience in manufacturing and commercializing precision woven mesh, emulsion, stencil films and chemicals. Knowledge we have gained from our customers has been compiled, analyzed and applied to produce a full range of screen making equipment; the jewel of this collection is the LTS Series.

The SAATI LTS range takes into account the contemporary needs of stencil makers with an eye toward future challenges that will demand more efficient and precise results. SAATI LTS machines are Direct Laser CtS (LTS) Image & Exposure units. They surpass the results of other CtS systems, and simultaneously provide enhancements to time and money spent producing stencils, as well as reducing your ecological footprint.

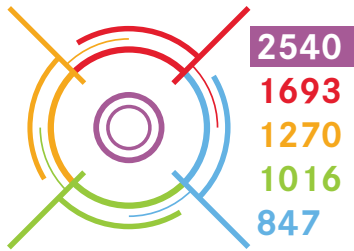


watch the video



# SAATI LTS 6080-VF

## Features



### Precision Choices

Five DPI options let you choose the highest resolution or the shortest cycle



### Long Life

Lasers have operational lives of 10,000+ hours at 100% strength



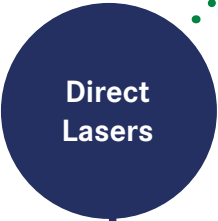
### Simplified

Save time by eliminating film pinhole checks and registration. Image & Expose in one quick process



### Flexibility

Compatible with all emulsion and film types



Direct Lasers



### Power Settings

Quickly and thoroughly cure even very high EOM dual-cure emulsions



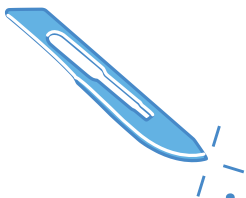


## Digital Workflow



### Faster Processing

Prepare art files, and create stencils immediately - no film creation or checks



### Precision Imaging

CtS Inkjet liquid drops spread before drying - direct laser imaging has higher fidelity.



### Digital Registration

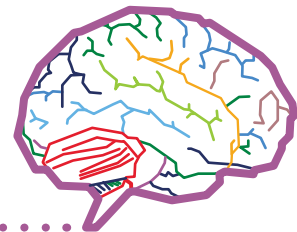
Eliminate difficulties by locking the frame into place and setting the laser start position digitally



### Save Money

Stop paying for media to image your screens

## No Consumables



### Digital Archive

Keep an archive of art files, save registration settings and duplicate programs to improve your workflow



### Spring Cleaning

Save space - eliminate storage for film and/or masking media



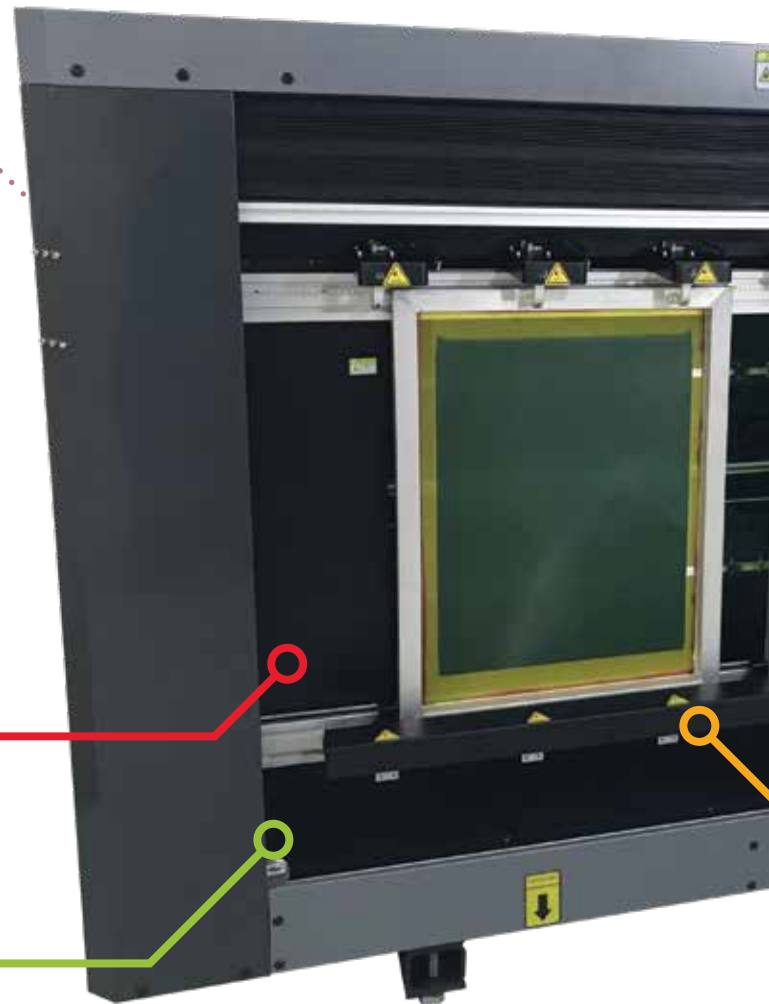
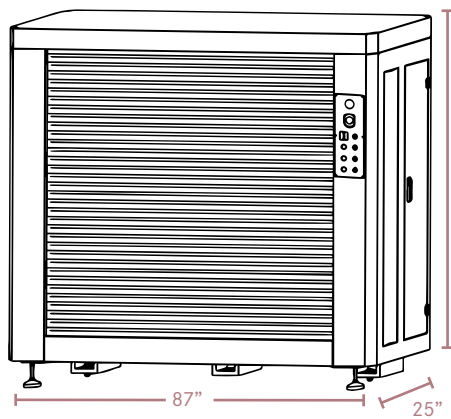
### Environmental Impact

No masking material like ink or wax goes down the drain - Avoid the use of plastic film

# SAATI LTS 6080-VF

Physical Specifications & Characteristics

## Dimensions



## Characteristics

Glass-free vertical loading and frame lock system ensure accurate, easy screen placement and reduced pinholes

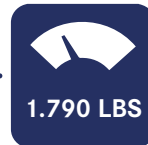
Solid metal construction provides a vibration free stencil making platform while maintaining a smaller footprint than other CtS machines

Easy to use pedals engage and disengage the frame clamps





## Weight

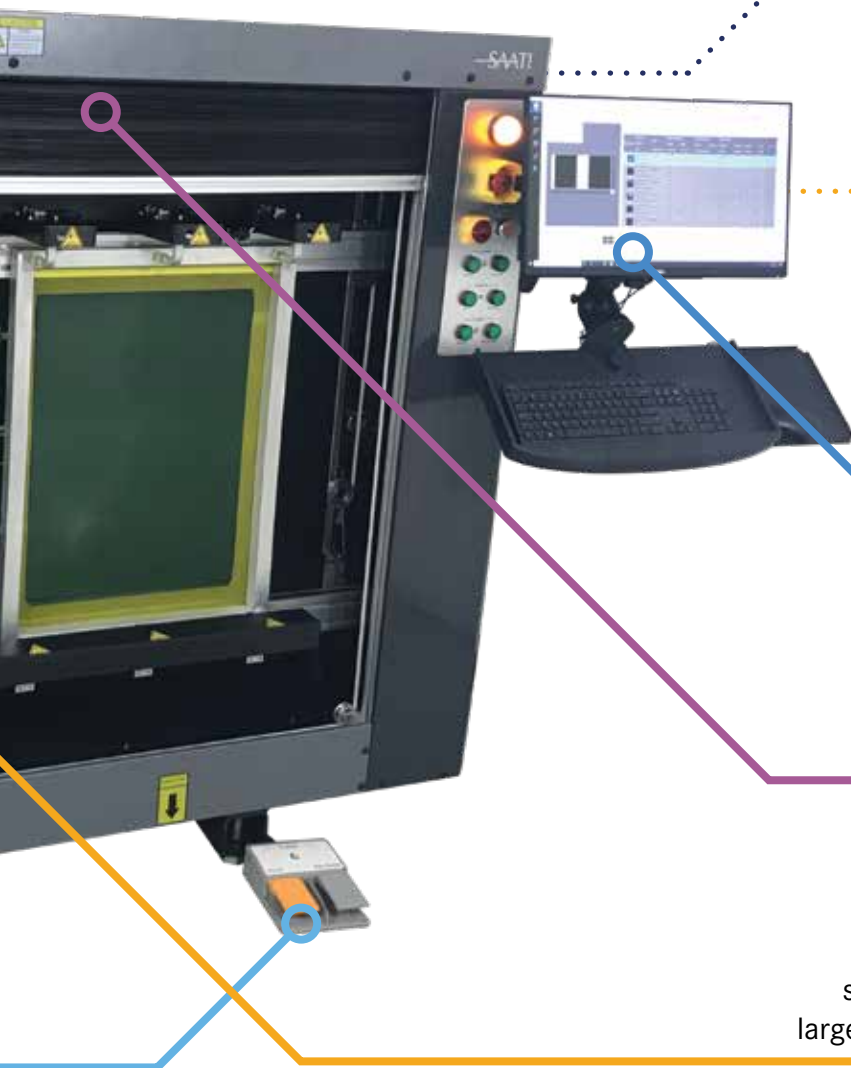


## Power



110V  
standard

240V  
with adapter



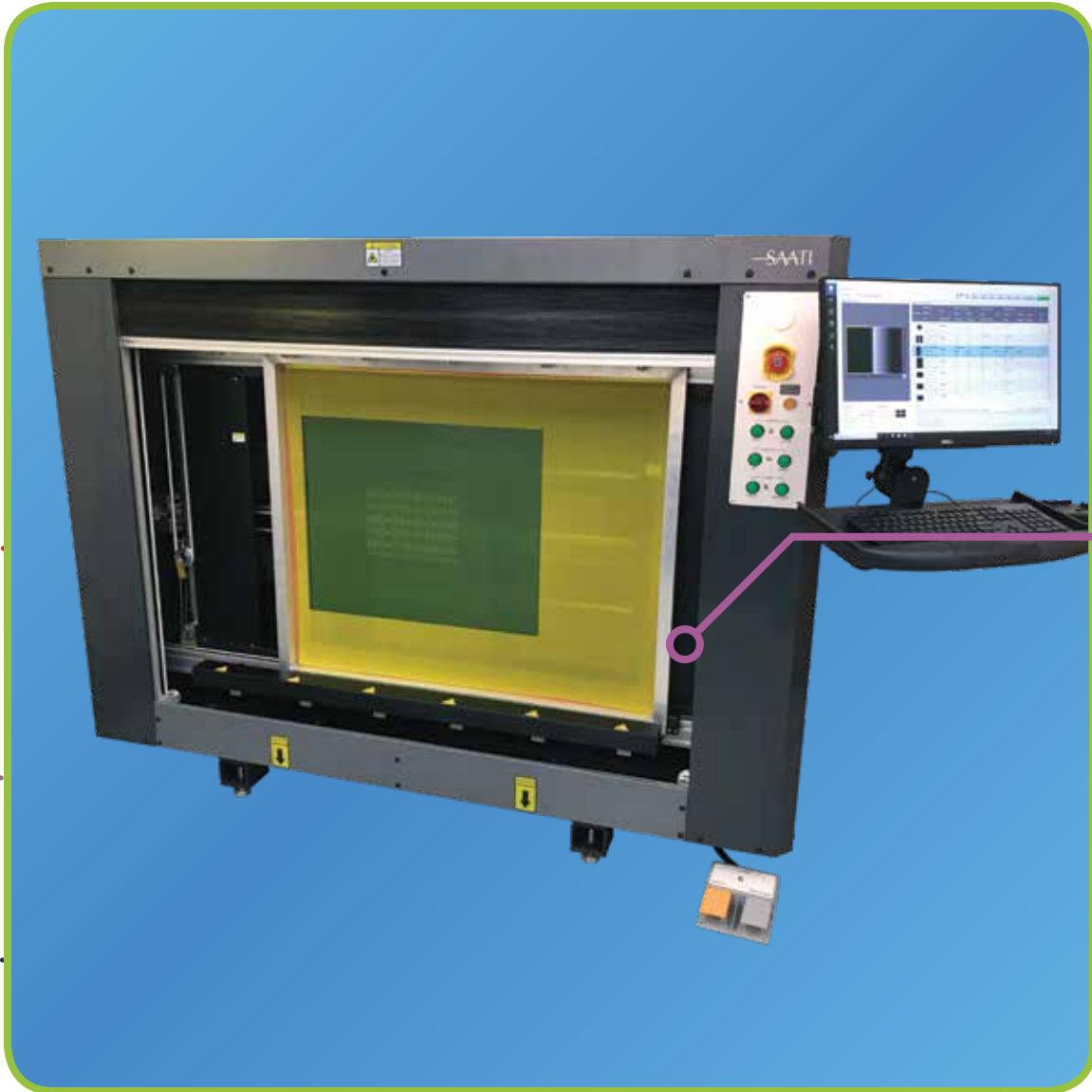
Touch screen workflow

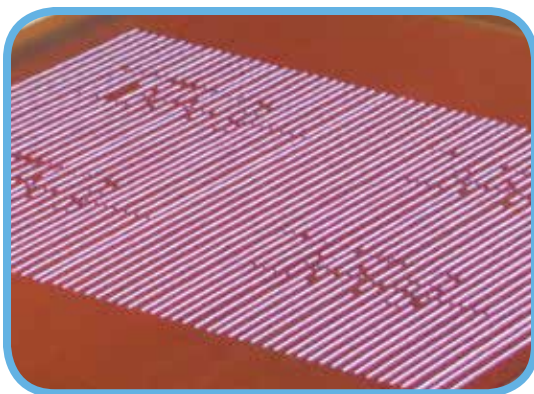
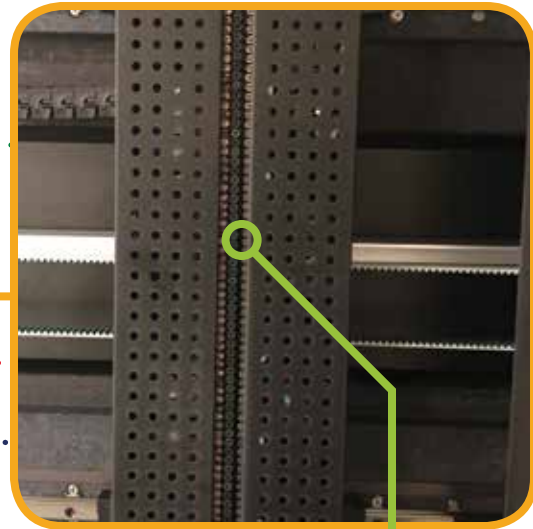
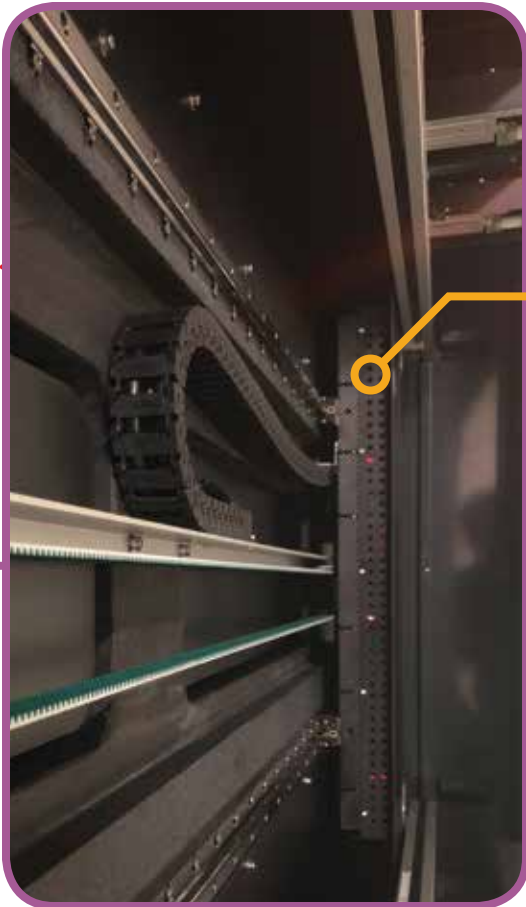
Motorized safety shutter

Large frame holding area enables simultaneous imaging & exposure of either large screens, or 1 or 2 standard size screens

# SAATI LTS 6080-VF

Laser Characteristics





- Linear array of 96 Blu-Ray Lasers on a belt-driven head, the system is durable and requires minimal maintenance
- The targeted light wavelength of the lasers maximizes curing speed and minimizes both power consumption and heat generation
- LED Lasers last 10,000+ hours with 100% efficiency

# SAATI LTS 6080-VF

Workflow Capabilities

## Resolution Settings

The SAATI LTS has five resolution resolution settings, each tailored to a different types of image requirements

847

Low Setting

- Fastest processing times
- Superior to inkjet films

1016

- Superior to inkjet/waxjet resolution

1270

Middle Setting

- Equivalent to DLE systems

1693

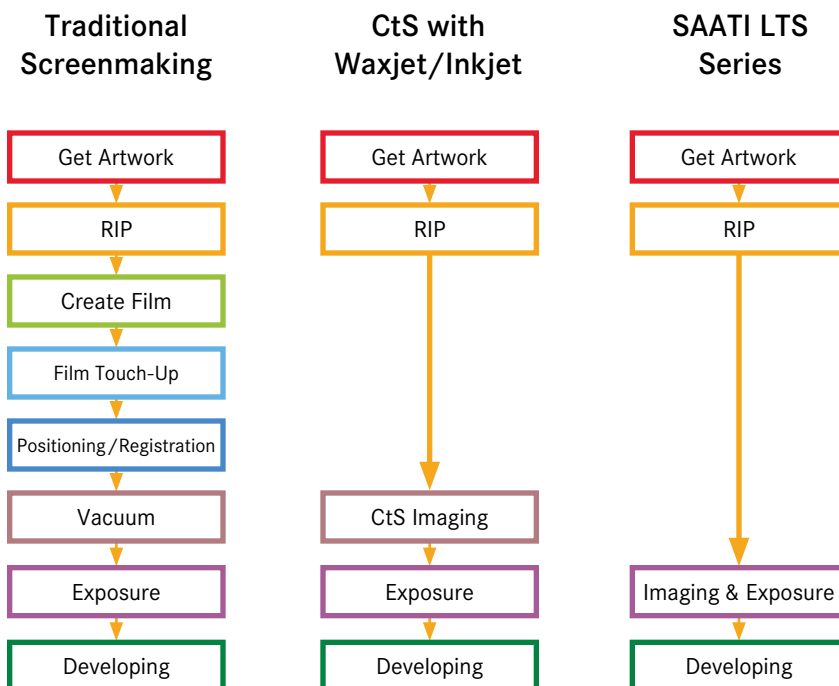
- Superior to many other DLE systems

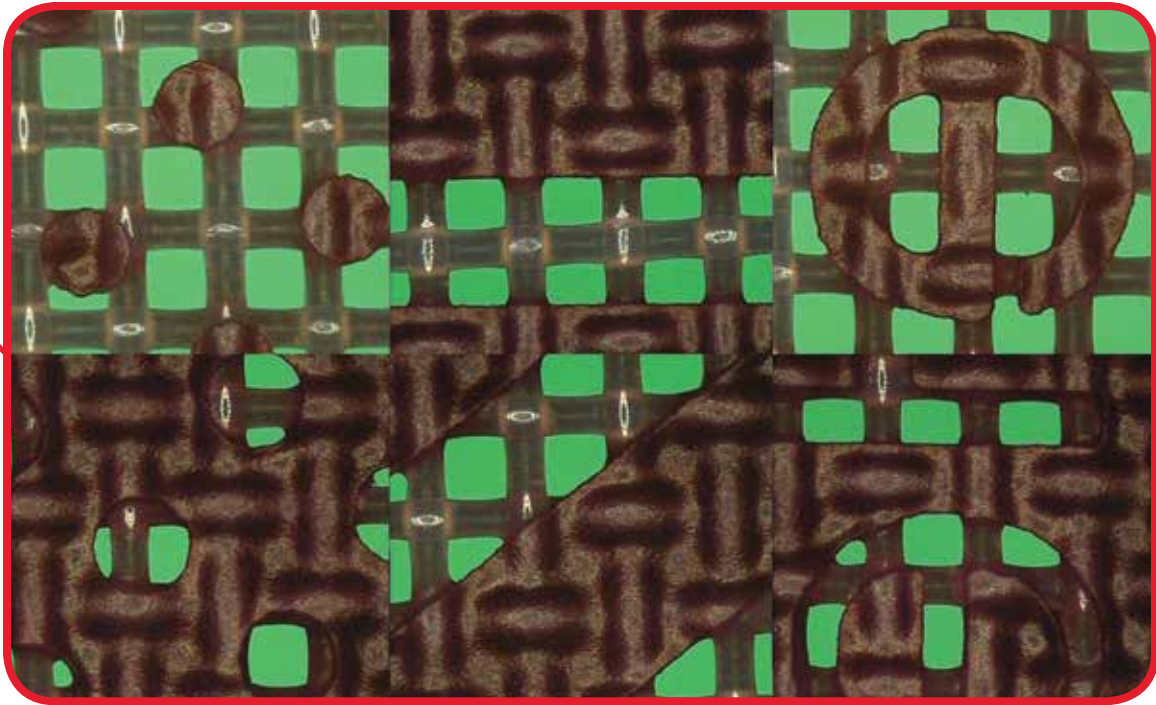
2540

Highest Setting

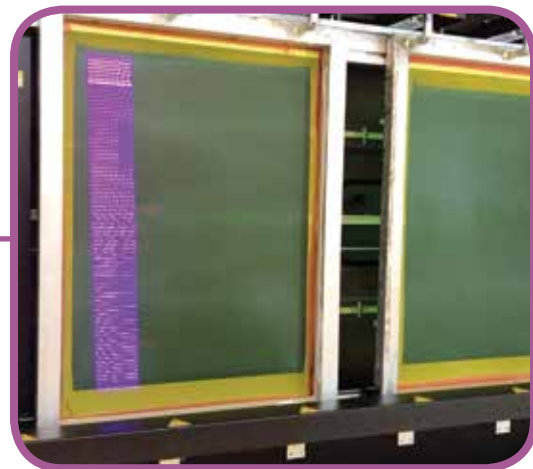
- Image setter quality for the most demanding applications

## Improvements to Workflow



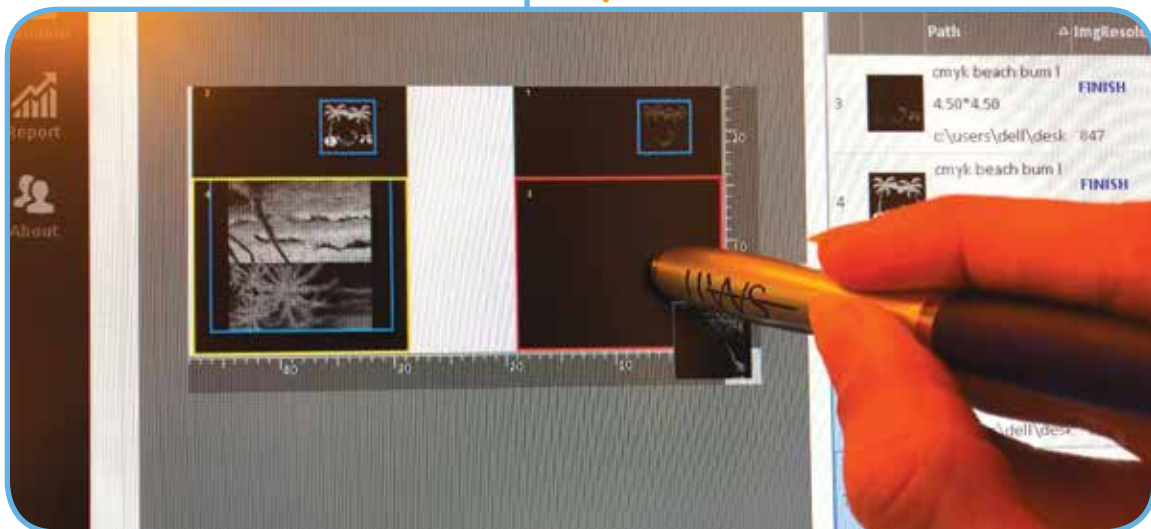
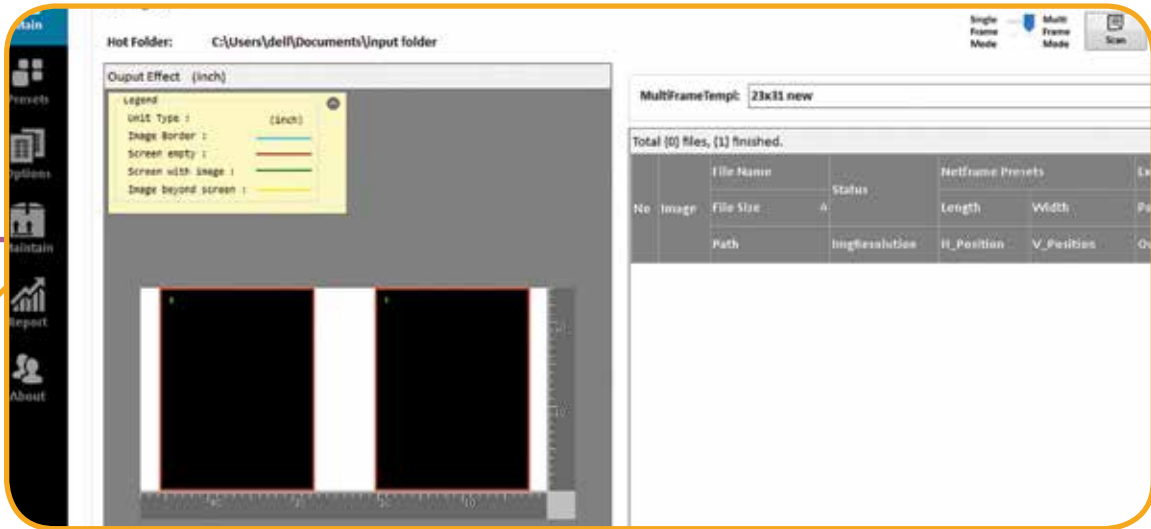


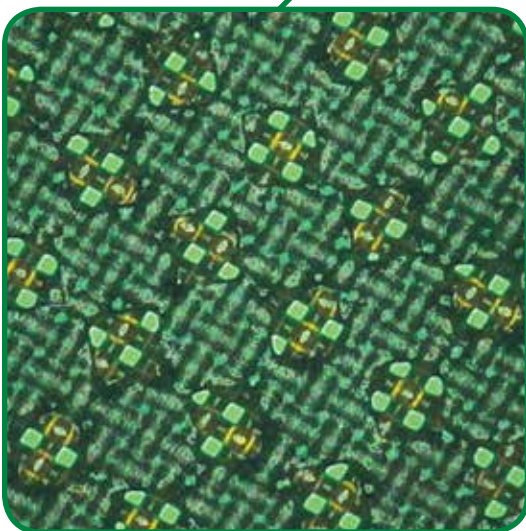
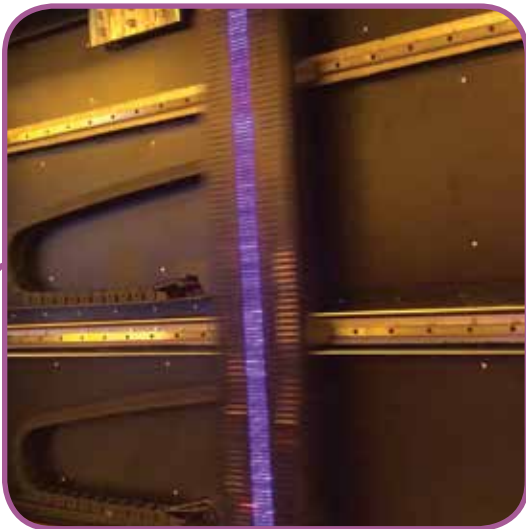
SAATI Mesh 110.80 coated with Textil PHU - 2,540 DPI setting



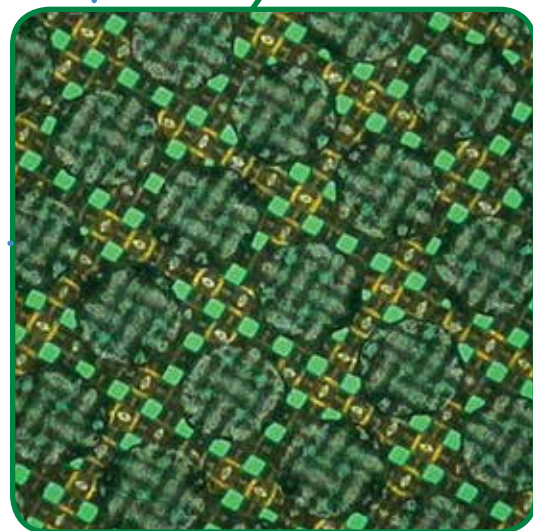
# SAATI LTS 6080-VF

## Workflow Capabilities





120 LPI 40% dot on 380.31 YE



120 LPI 60% dot on 380.31 YE

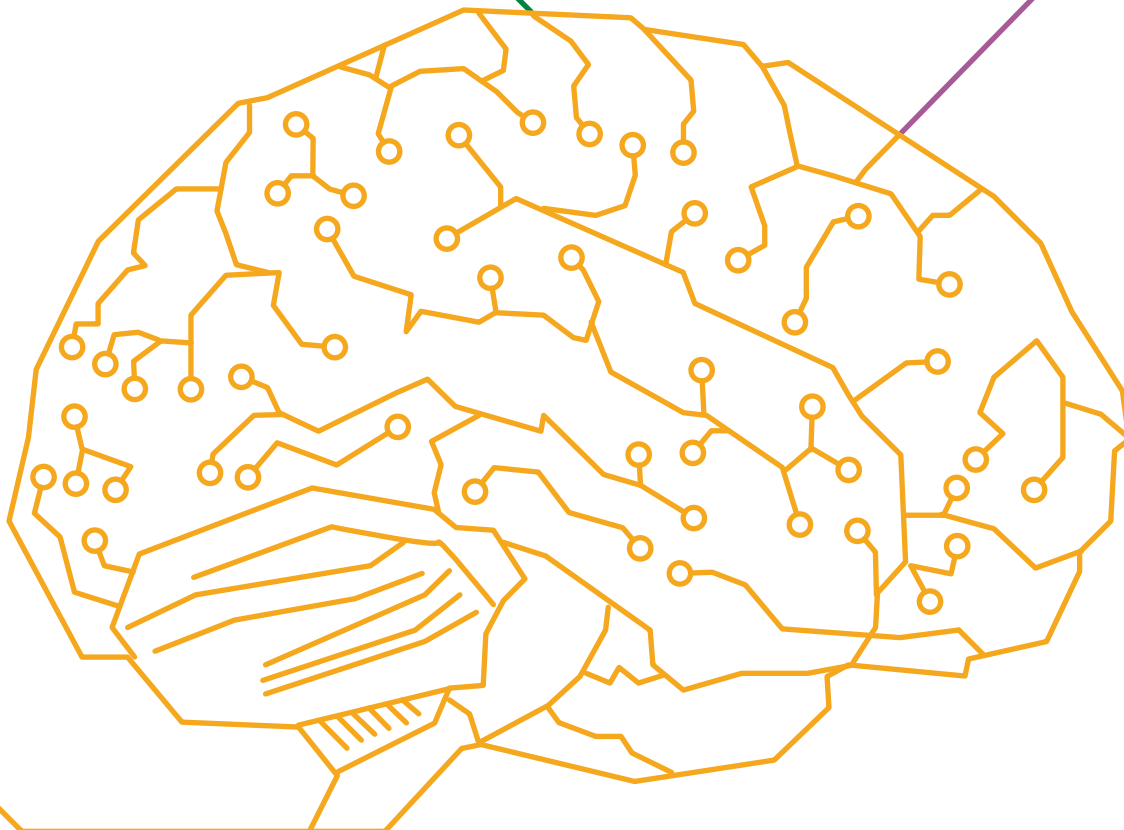
# SAATI LTS 6080-VF

## Software Capabilities



### User Friendly Layout System

- Set size & location of image(s) and define exposure area
- Place multiple stencil images across 1 or more screens with touchscreen or mouse
- Finalized layouts go to queue for easy work management







### Exposure System

- Set the laser power and scan speed to effectively and thoroughly cure all emulsion and film types in under 3:00
- Customize settings and/or create standard templates for future use
- Proprietary file naming system automatically loads Netframe, Image Pattern & Exposure settings (not required)

Name	Power	Speed	Resolution	Scan Length	Power/Length	Offset
Image_001	40	300	1270	300	132.3	0
Image_002	40	300	1270	300	132.3	0
Image_003	40	300	1270	300	132.3	0
Image_004	40	300	1270	300	132.3	0
Image_005	40	300	1270	300	132.3	0
Image_006	40	300	1270	300	132.3	0
Image_007	40	300	1270	300	132.3	0
Image_008	40	300	1270	300	132.3	0
Image_009	40	300	1270	300	132.3	0
Image_010	40	300	1270	300	132.3	0
Image_011	40	300	1270	300	132.3	0
Image_012	40	300	1270	300	132.3	0
Image_013	40	300	1270	300	132.3	0
Image_014	40	300	1270	300	132.3	0
Image_015	40	300	1270	300	132.3	0
Image_016	40	300	1270	300	132.3	0
Image_017	40	300	1270	300	132.3	0
Image_018	40	300	1270	300	132.3	0
Image_019	40	300	1270	300	132.3	0
Image_020	40	300	1270	300	132.3	0

### Create Your Own Archive

- Processed files settings are saved
- After screen imaging, layouts go to designated folder for archiving or deletion
- Create your own file archive for easy retrieval through the search function

# SAATI LTS 6080-VF

Alternative LTS Models



## LTS Series Direct Laser CtS

- 405nm lasers that quickly and thoroughly cure all emulsion & film types, even high EOM dualcure in under 3 minutes
- Image & Expose screens simultaneously with five DPI options: 2,540 - 1,690 - 1,270 - 1016 - 847
- Easy to use software compatible with many RIPs
- Compatible with 110 or 220V power



### SAATI LTS 6080

- Facedown glass panel with enclosing lid and safe viewing window
- 96 laser array
- Digitally register, image & expose several small screens simultaneously
- Total image area of up to 24" x 31.5"
- Comes with pneumatic clamp registration system, also adaptable to other systems
- Can be rolled easily into place with heavy duty casters and fits through standard doorways
- Overall Dimensions: 56" x 28" x 36"
- Weight: 882 lbs.

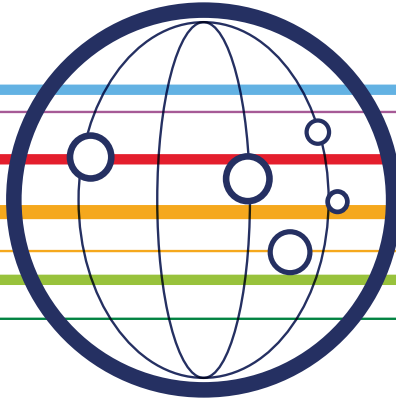


### SAATI LTS 1015

- Vertical glass free design with safety shutter
- 160 laser array
- Larger format model than LTS 6080-VF - image & expose two 25x36" screens together
- Total image area of up to 39" x 57"
- Larger custom sizes available upon inquiry
- Standard Dimensions: 101" x 33.25" x 81"
- Standard Weight: 3,307 lbs.



**We cross-innovate**

**SAATI S.p.a**

Via Milano, 14  
22070 Appiano Gentile (Co), Italy  
Tel : +39 0319711  
Fax: +39 031 933392  
E-mail: info.it@saati.com

**SAATI Americas Corp.**

201 Fairview St. Extension  
Fountain Inn, SC 29644  
Toll-Free: +1 800 431 2200  
Fax: +1 864 862 0089  
E-mail: info.us@saati.com

**SAATI Technical Fabrics (Tianjin) Co., Ltd.**

Cross Of Saida 2nd Branch Road and Saida Century Avenue,  
Xiqing Economic Development Area,  
Tianjin, China 300385  
Tel: +86 22 23960843  
Fax: +86 22 23962116  
E-mail: info.cn@saati.com

**SAATI Deutschland GmbH**

Ostring 22 46348 Raesfeld, Germany  
Phone: +49 2865 95800  
Fax: +49 2865 958010  
E-mail: info.de@saati.com

**SAATI Korea Ltd.**

22, Dangjeong-ro, Gunpo-si Gyeonggi-do, 435-833, Korea  
Phone: +82 31 429 9337  
Fax: +82 31 429 9338

**SAATI France**

74 Route de Bapaume 80360 Sailly Saillisel, France  
Phone: +33 3 22 85 77 00  
Fax: +33 3 22 85 77 00  
E-mail: info.fr@saati.com

**SAATI Serigrafía Ibérica, S.a.**

Pol. Ind. El Mijares, C/ Industria, nº 13 12550  
Almazora, Castellón, Spain  
Phone: +34 964550688  
Fax: +34 964551049  
E-mail: info.es@saati.com

**SAATI Russia**

23 Shvetsova str. 198095 Saint-Petersburg, Russia  
Phone: +79 062788343

**Website**

[www.SAATI.com](http://www.SAATI.com)

**—SAATI**  
We cross-innovate