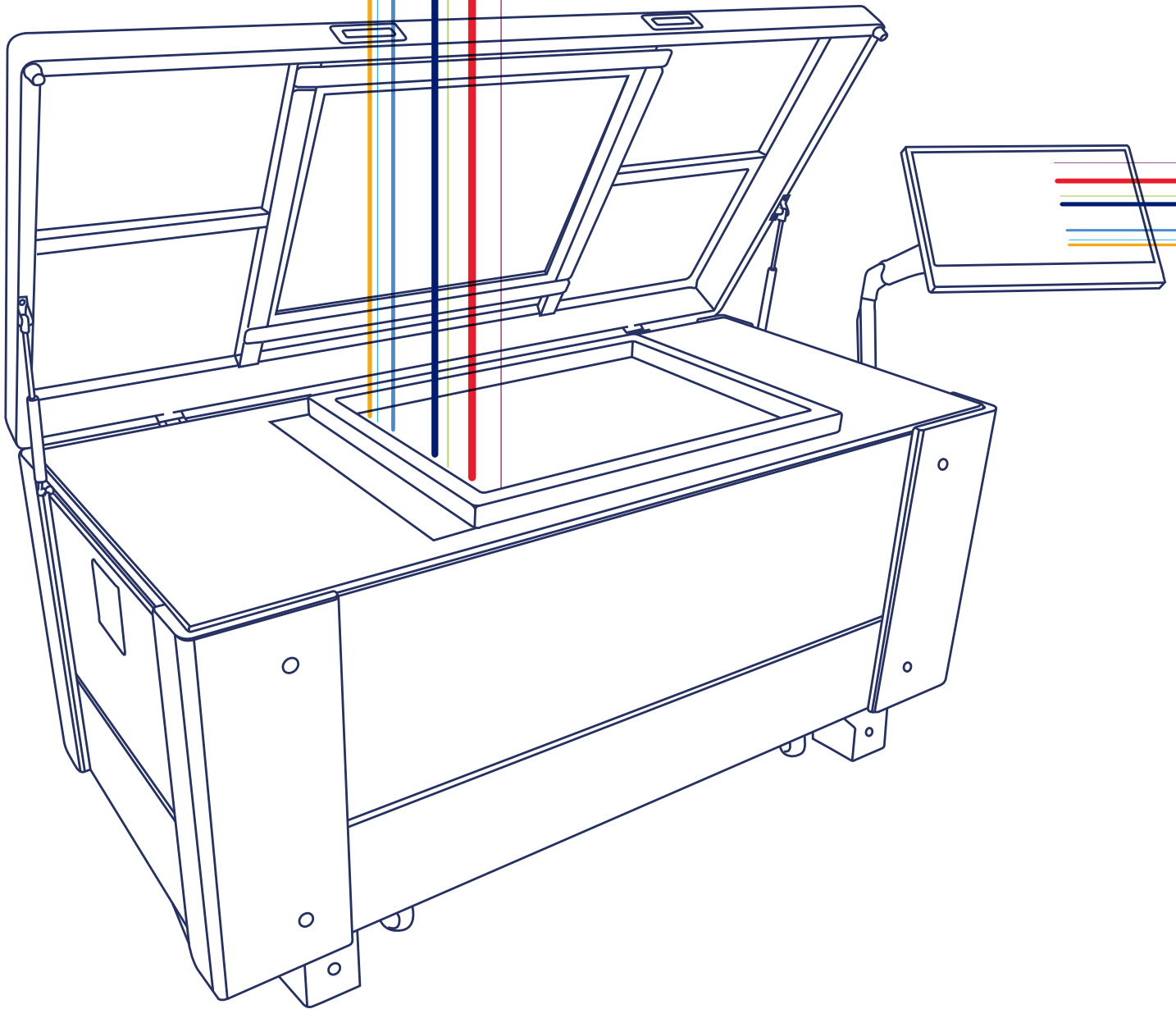


LTS 6080

The Advanced Direct Laser CtS
Imaging & Exposure System



—SAATI

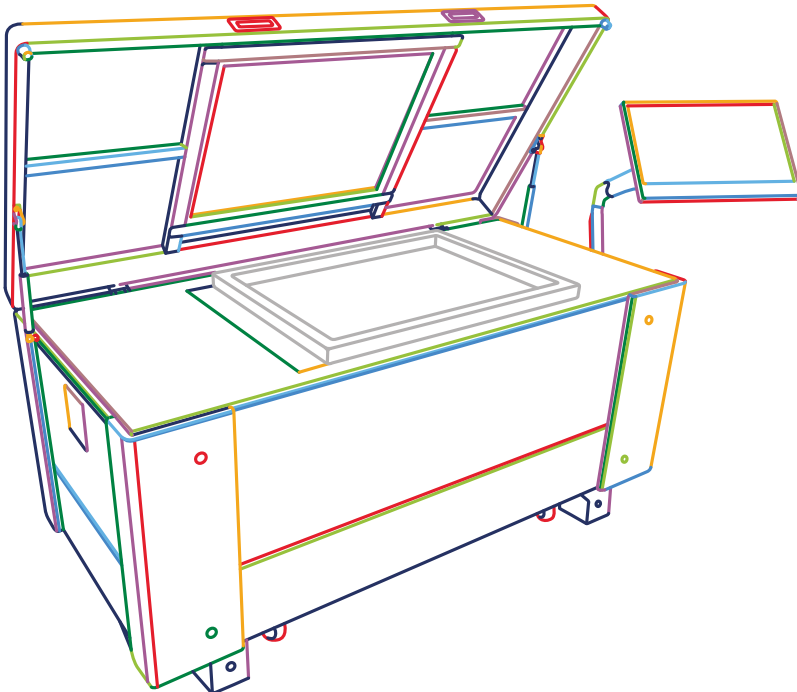
We cross-innovate



We cross-innovate

Table of Contents

Introduction	02
Features	04
Physical Specifications	06
Laser Characteristics	08
Workflow Capabilities	10



The LTS Series: Introducing State-of-the-Art Laser Stencil Making by SAATI

SAATI has decades of experience in manufacturing and commercializing precision woven mesh, emulsion, stencil films and chemicals. Knowledge we have gained from our customers has been compiled, analyzed and applied to produce a full range of screen making equipment, and the jewel of this collection is the LTS Series.

The SAATI LTS range takes into account the contemporary needs of stencil makers with an eye towards future challenges that will demand more efficient and precise results. SAATI LTS machines are Direct Laser CtS Image & Exposure units. They surpass the results of other CtS systems, and simultaneously provide enhancements to time and money spent producing stencils, as well as reducing your ecological footprint.

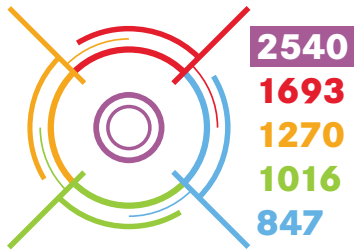


watch the video



SAATI LTS 6080

Features



Precision Choices

Five DPI options let you choose the highest resolution or the shortest cycle



Long Life

Lasers have operational lives of 10,000+ hours at 100% strength



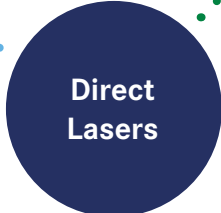
Simplified

Save time by eliminating film pinhole checks and registration. Image & Expose in one quick process



Flexibility

Compatible with all emulsion and film types



Direct Lasers



Power Settings

Quickly and thoroughly cure even very high EOM dual-cure emulsions



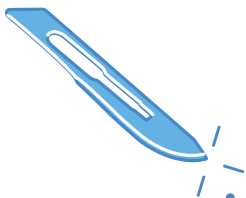


Digital Workflow



Faster Processing

Prepare art files, and create stencils immediately - no film creation or checks



Precision Imaging

CtS Inkjet liquid drops spread before drying - direct laser imaging has higher fidelity.



Digital Registration

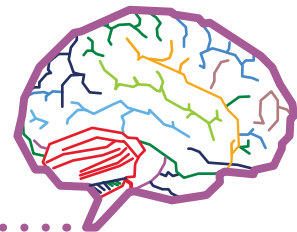
Eliminate difficulties by locking the frame into place and setting the laser start position digitally



Save Money

Stop paying for media to image your screens

No Consumables



Digital Archive

Keep an archive of art files, save registration settings and duplicate programs to improve your workflow



Spring Cleaning

Save space - eliminate storage for film and/or masking media



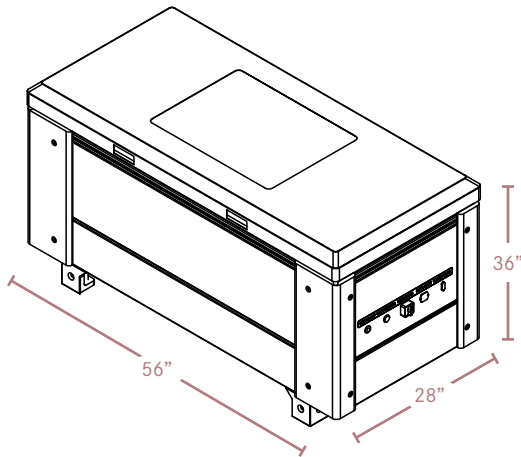
Environmental Impact

No masking material like ink or wax goes down the drain - Avoid the use of plastic film

SAATI LTS 6080

Physical Specifications & Characteristics

Dimensions

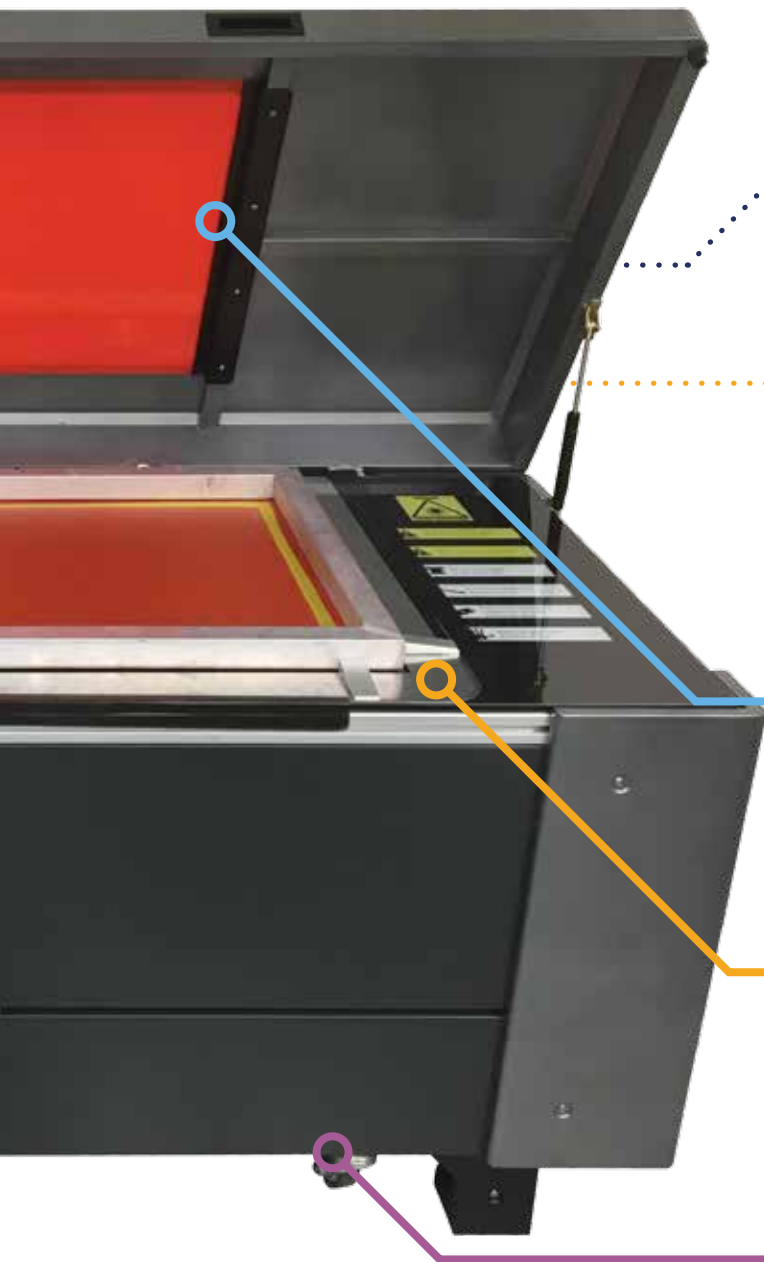


Characteristics

Facedown glass panel with enclosing lid

Solid metal construction provides a vibration free stencil making platform





Weight



Power



110V
standard

240V
with adapter

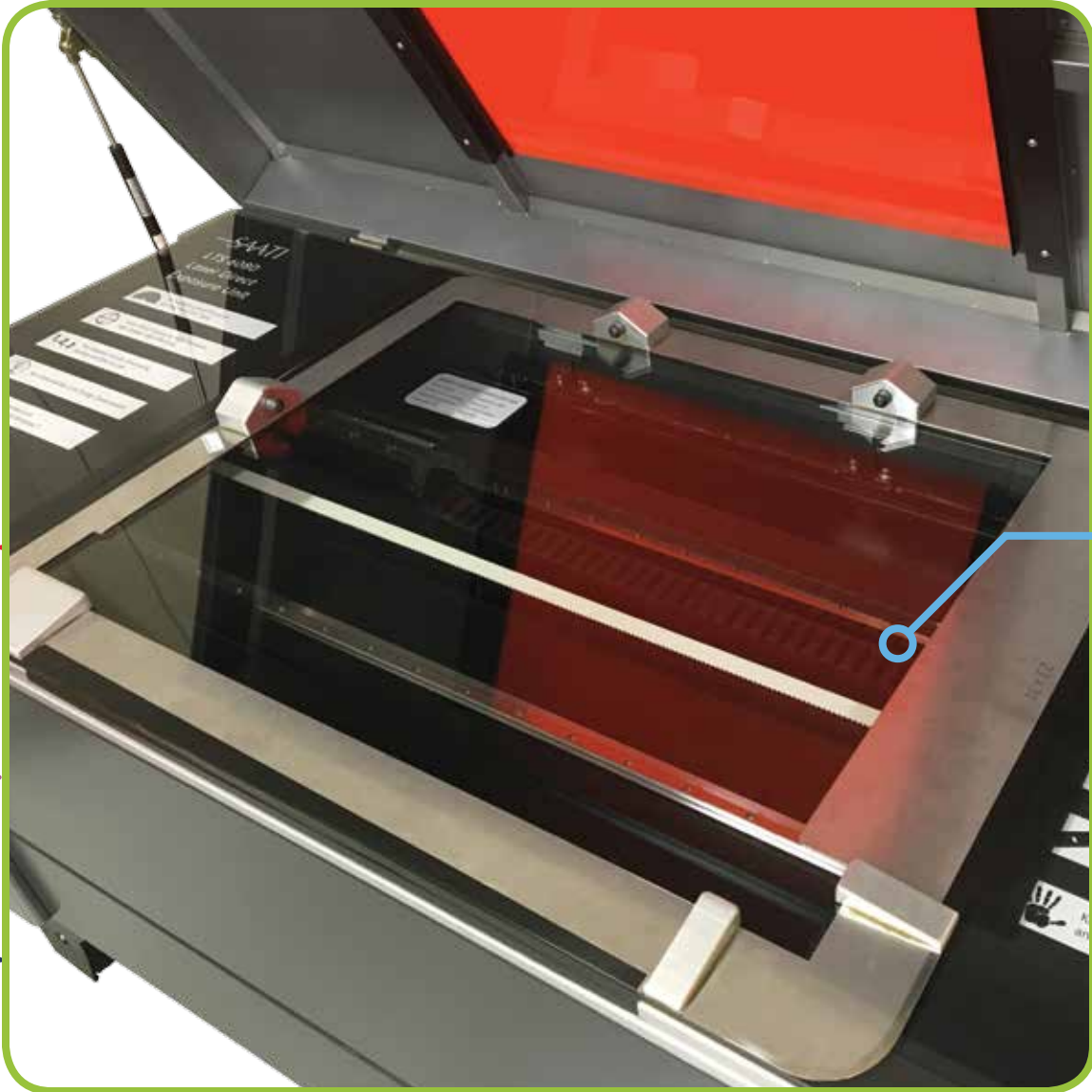
Safe Viewing Window for observing exposure program progress

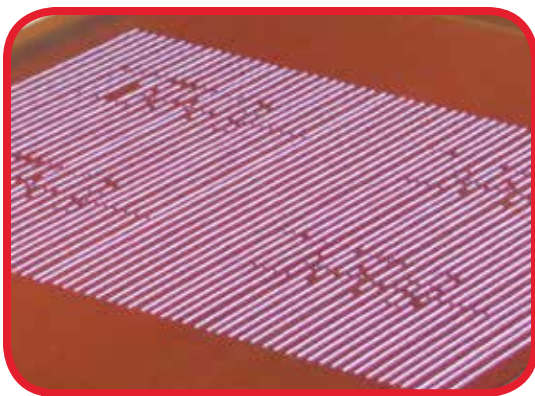
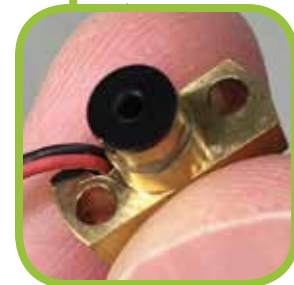
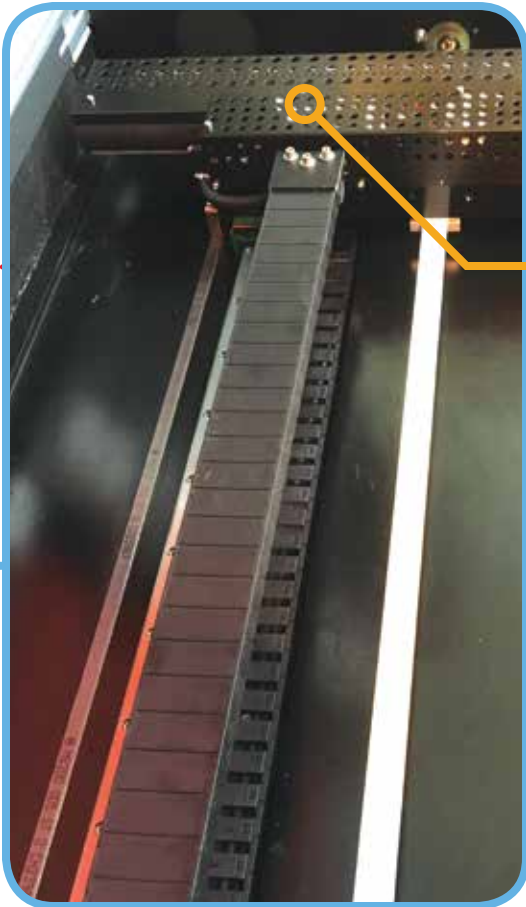
Adaptable to various types of screen registration systems

Solid casters and slim build allow easy movement through standard doorways for unit placement

SAATI LTS 6080

Laser Characteristics





- Linear array of 96 Blu-Ray Lasers on a belt-driven head, the system is durable and requires minimal maintenance
- The targeted light wavelength of the lasers maximizes curing speed and minimizes both power consumption and heat generation
- LED Lasers last 10,000+ hours with 100% efficiency

SAATI LTS 6080

Workflow Capabilities

Resolution Settings

The SAATI LTS has five resolution resolution settings, each tailored to a different types of image requirements

847

Low Setting

- Fastest processing times
- Superior to inkjet films

1016

- Superior to inkjet/waxjet resolution

1270

Middle Setting

- Equivalent to DLE systems

1693

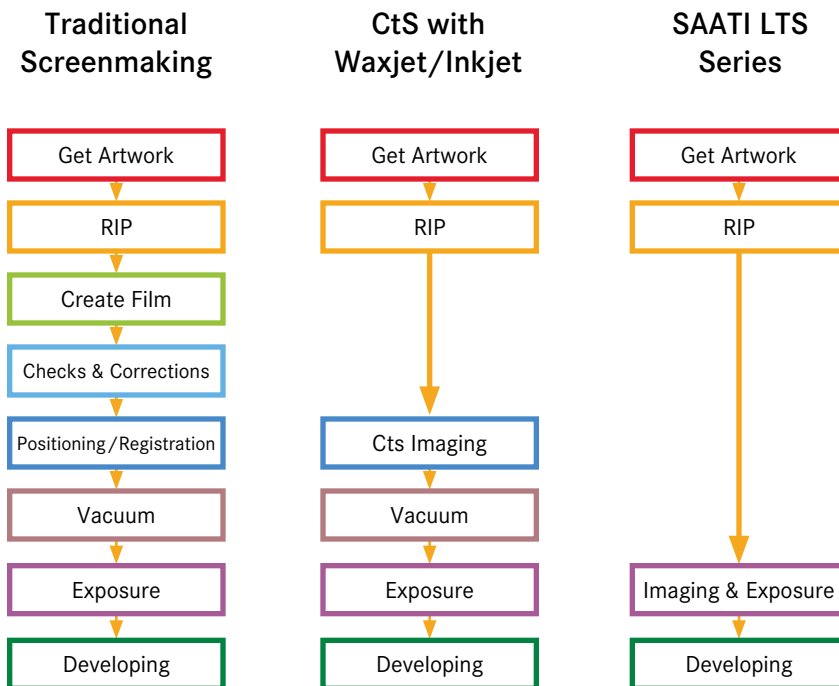
- Superior to many other DLE systems

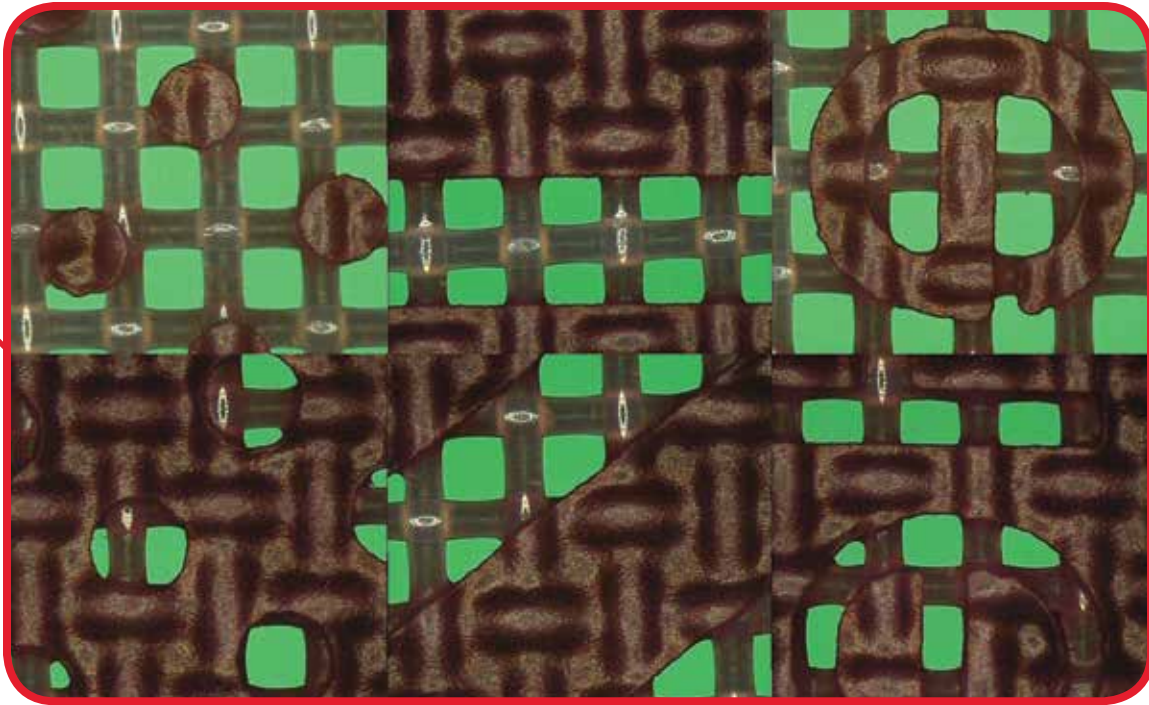
2540

Highest Setting

- Image setter quality for the most demanding applications

Improvements to Workflow





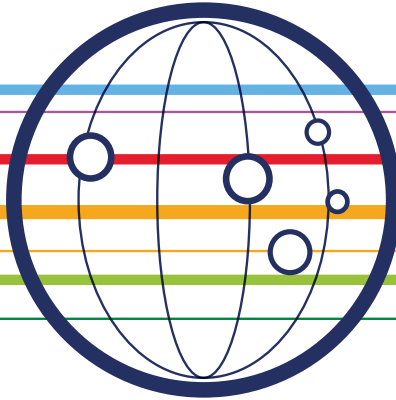
SAATI LTS 6080



Notes



We cross-innovate

**SAATI S.p.a**

Via Milano, 14
22070 Appiano Gentile (Co), Italy
Tel : +39 0319711
Fax: +39 031 933392
E-mail: info.it@saati.com

SAATI Americas Corp.

201 Fairview St. Extension
Fountain Inn, SC 29644
Toll-Free: +1 800 431 2200
Fax: +1 864 862 0089
E-mail: info.us@saati.com

SAATI Technical Fabrics (Tianjin) Co., Ltd.

Cross Of Saida 2nd Branch Road and Saida Century Avenue,
Xiqing Economic Development Area,
Tianjin, China 300385
Tel: +86 22 23960843
Fax: +86 22 23962116
E-mail: info.cn@saati.com

SAATI Deutschland GmbH

Ostring 22 46348 Raesfeld, Germany
Phone: +49 2865 95800
Fax: +49 2865 958010
E-mail: info.de@saati.com

SAATI Korea Ltd.

22, Dangjeong-ro, Gunpo-si Gyeonggi-do, 435-833, Korea
Phone: +82 31 429 9337
Fax: +82 31 429 9338

SAATI France

74 Route de Bapaume 80360 Sailly Saillisel, France
Phone: +33 3 22 85 77 00
Fax: +33 3 22 85 77 00
E-mail: info.fr@saati.com

SAATI Serigrafía Ibérica, S.a.

Pol. Ind. El Mijares, C/ Industria, nº 13 12550
Almazora, Castellón, Spain
Phone: +34 964550688
Fax: +34 964551049
E-mail: info.es@saati.com

SAATI Russia

23 Shvetsova str. 198095 Saint-Petersburg, Russia
Phone: +79 062788343

Website

www.SAATI.com

—SAATI
We cross-innovate