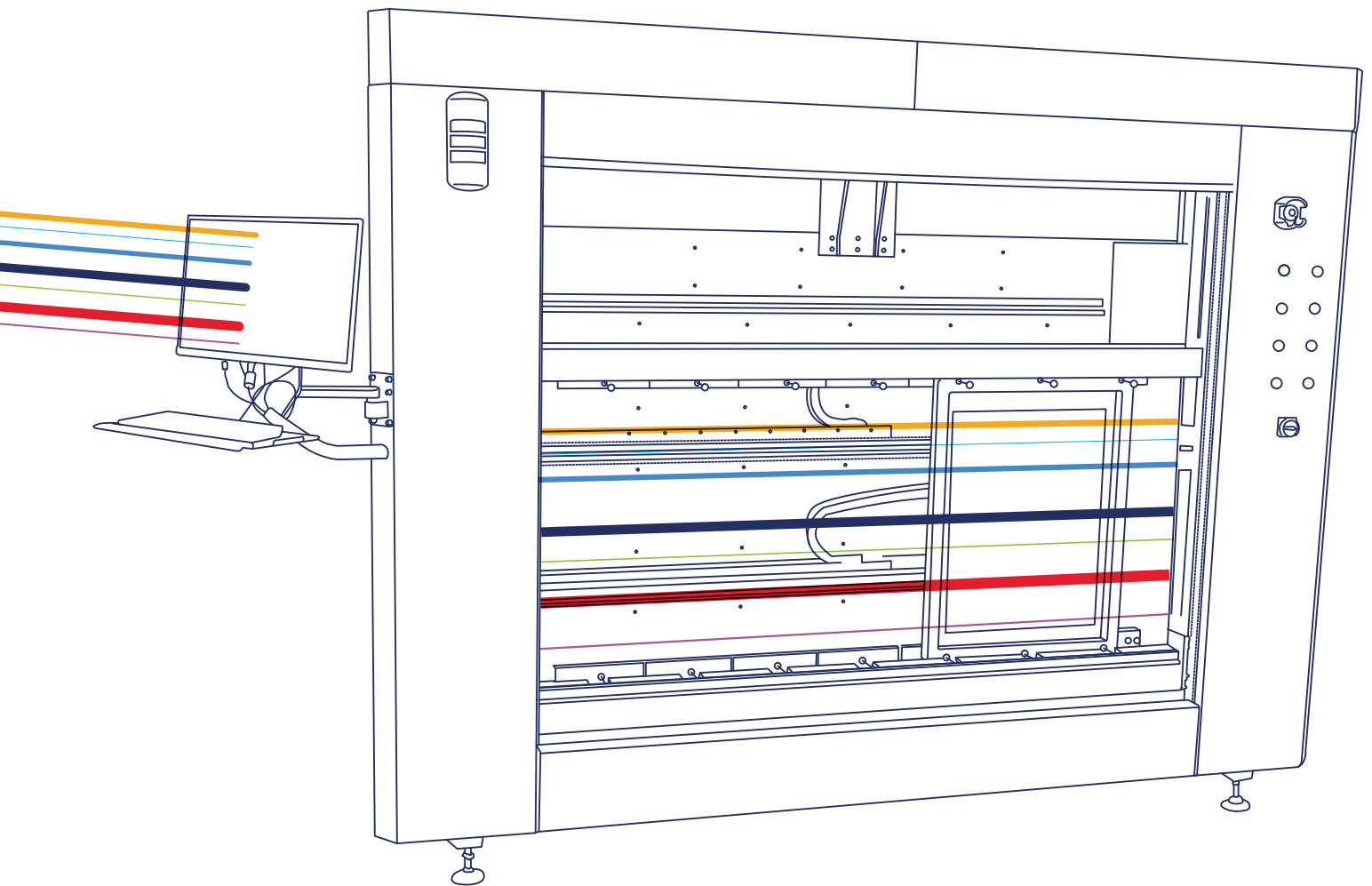


LTS 1015

The Advanced Direct Laser CtS Imaging & Exposure System

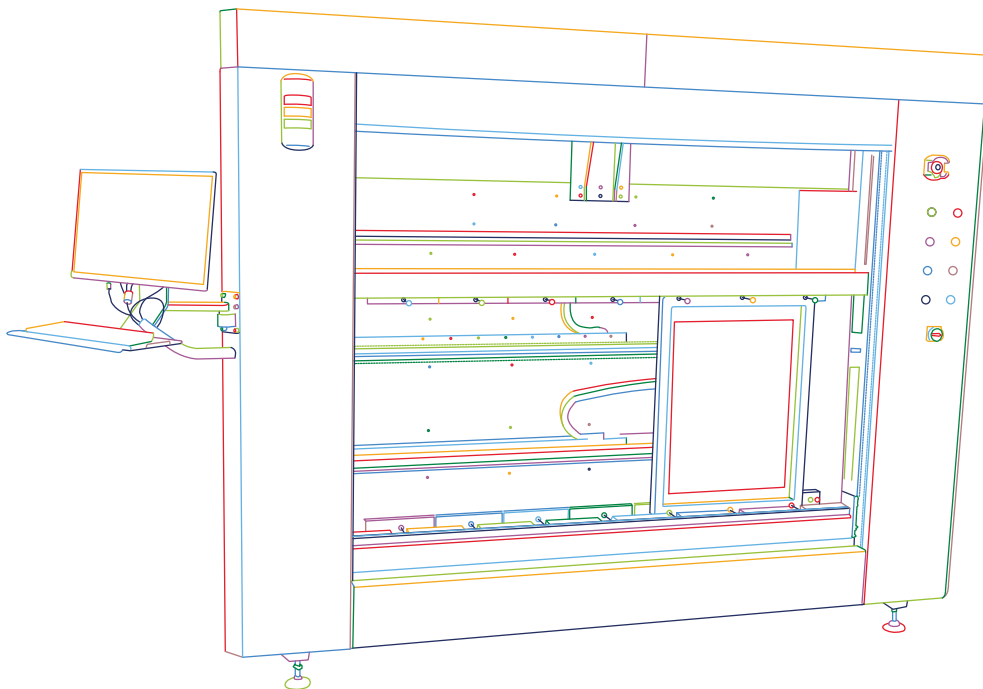




We cross-innovate

Table of Contents

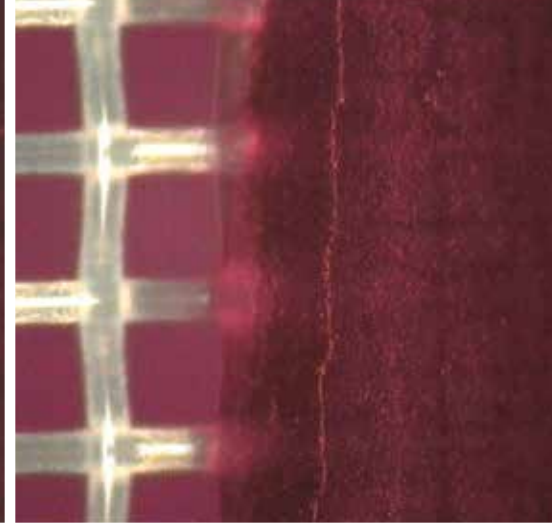
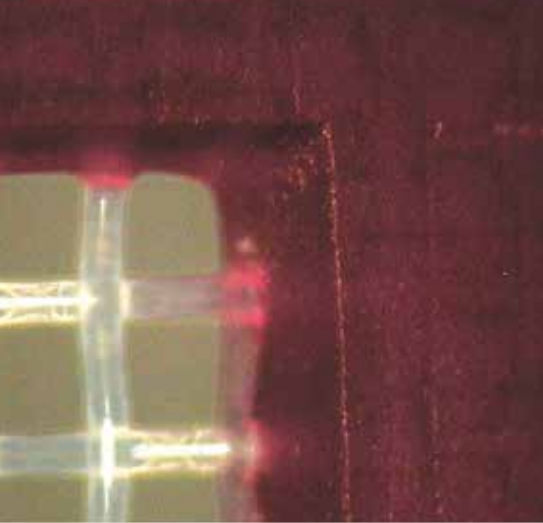
Introduction	02
Features	04
Physical Specifications	06
Laser Characteristics	08
Workflow Capabilities	10
Software Capabilities	14
Technical Overview	16



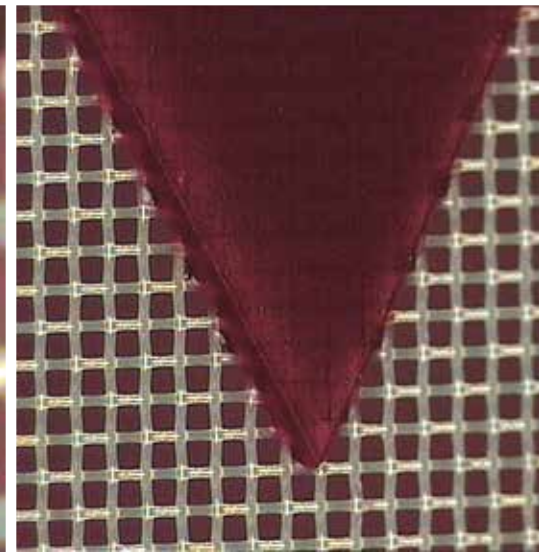
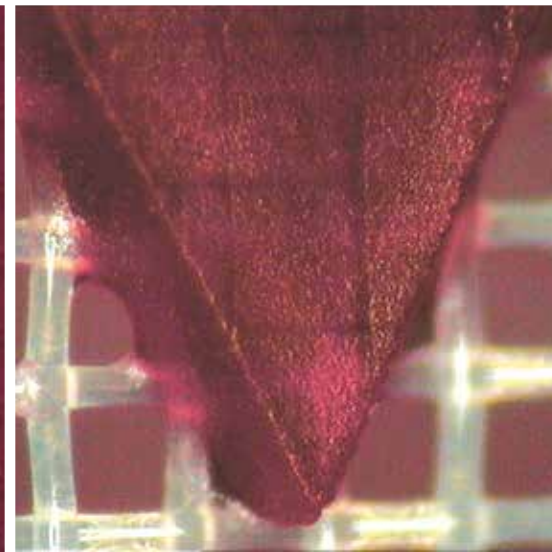
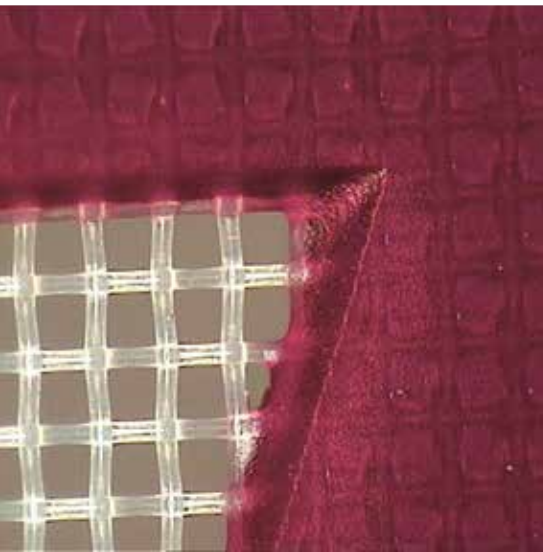
The LTS Series: Introducing State-of-the-Art Laser Stencil Making by SAATI

SAATI has decades of experience in manufacturing and commercializing precision woven mesh, emulsion, stencil films and chemicals. Knowledge we have gained from our customers has been compiled, analyzed and applied to produce a full range of screen making equipment; the jewel of this collection is the LTS Series.

The SAATI LTS range takes into account the contemporary needs of stencil makers with an eye toward future challenges that will demand more efficient and precise results. SAATI LTS machines are Direct Laser CtS (LTS) Image & Exposure units. They surpass the results of other CtS systems, and simultaneously provide enhancements to time and money spent producing stencils, as well as reducing your ecological footprint.

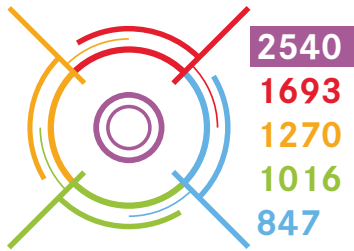


watch the video



SAATI LTS 1015

Features



Precision Choices

Five DPI options let you choose the highest resolution or the shortest cycle



Long Life

Lasers have operational lives of 10,000+ hours at 100% strength



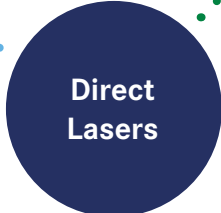
Simplified

Save time by eliminating film pinhole checks and registration. Image & Expose in one quick process

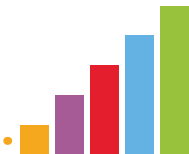


Flexibility

Compatible with all emulsion and film types



Direct Lasers



Power Settings

Quickly and thoroughly cure even very high EOM dual-cure emulsions



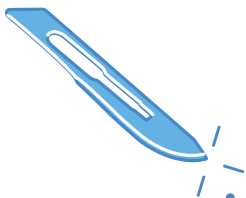


Digital Workflow



Faster Processing

Prepare art files, and create stencils immediately - no film creation or checks



Precision Imaging

CtS Inkjet liquid drops spread before drying - direct laser imaging has higher fidelity.



Digital Registration

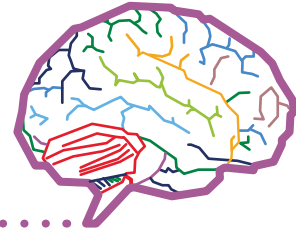
Eliminate difficulties by locking the frame into place and setting the laser start position digitally



Save Money

Stop paying for media to image your screens

No Consumables



Digital Archive

Keep an archive of art files, save registration settings and duplicate programs to improve your workflow



Spring Cleaning

Save space - eliminate storage for film and/or masking media



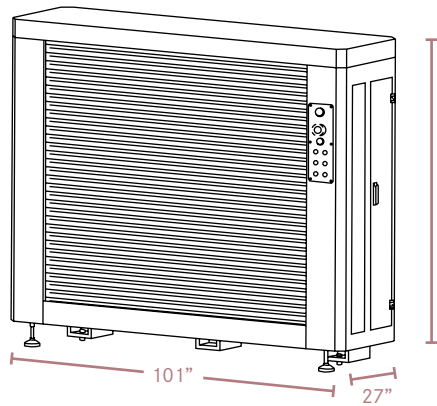
Environmental Impact

No masking material like ink or wax goes down the drain - Avoid the use of plastic film

SAATI LTS 1015

Physical Specifications & Characteristics

Dimensions



Characteristics

Touch screen with powerful workflow software

Glass-free vertical loading and frame lock system ensure accurate, easy screen placement and reduced pinholes

Solid metal construction provides a vibration free stencil making platform while maintaining a smaller footprint than other CtS machines



Weight



Power



110V
standard

240V
with adapter



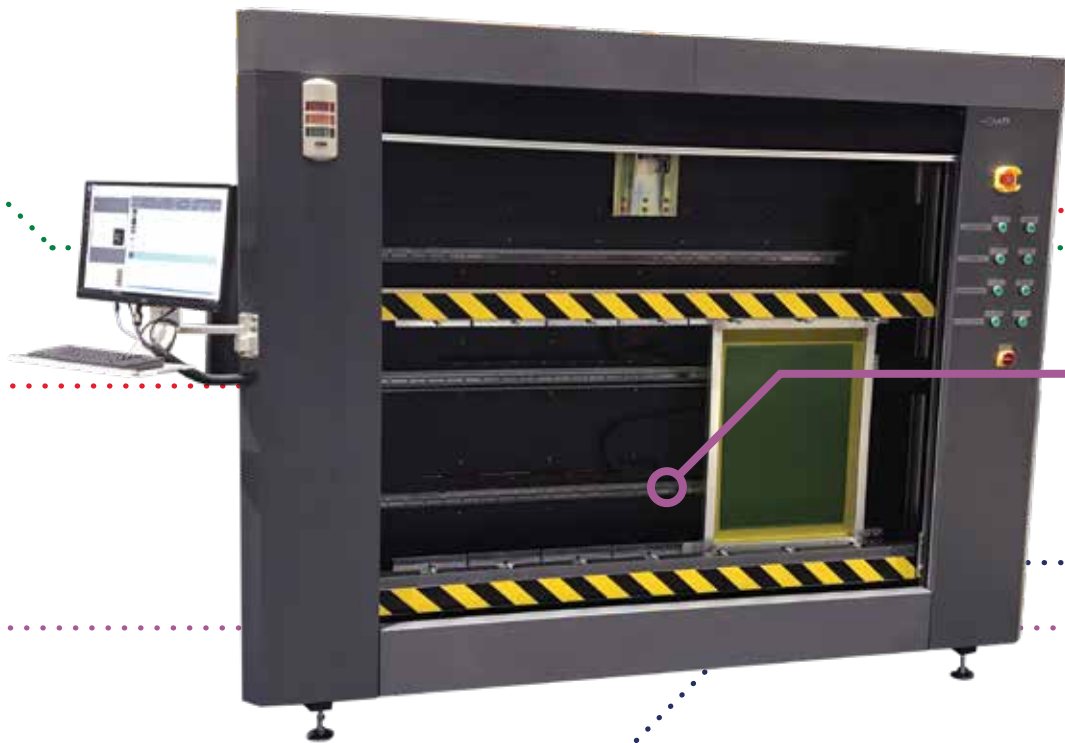
Easy to use control panel
engages and disengages frame
clamps, carriages, shutter & emergency stop

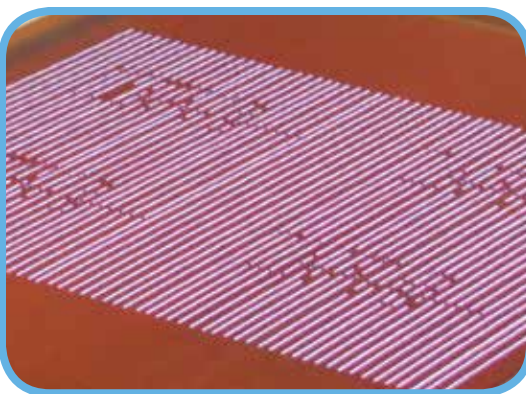
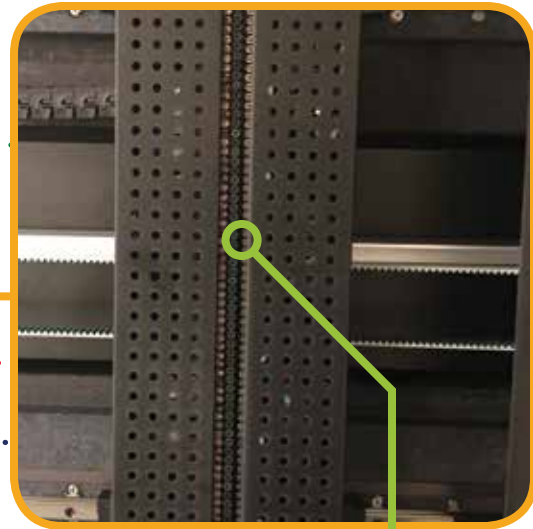
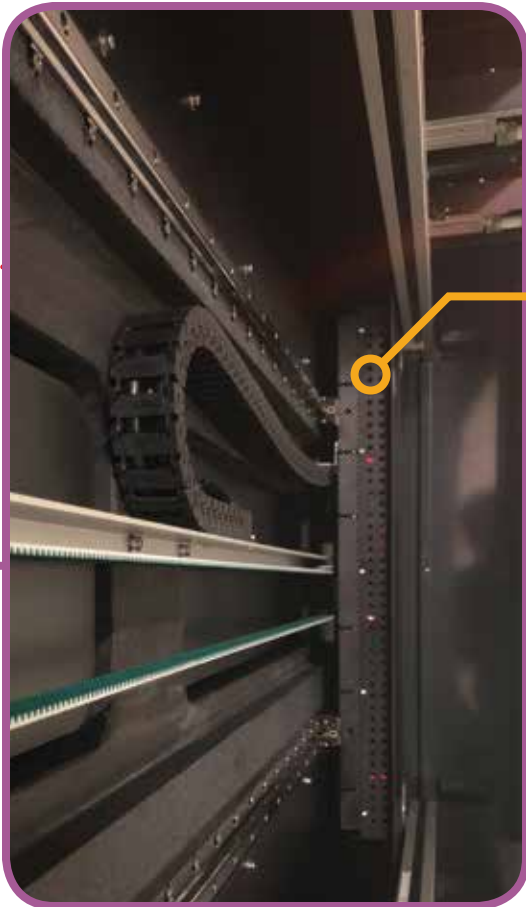
Motorized safety shutter

Large frame holding area enables
simultaneous imaging & exposure of either
large screens, or 1 or 2 standard size screens

SAATI LTS 1015

Laser Characteristics





- Linear array of 160 Blu-Ray Lasers on a belt-driven head, the system is durable and requires minimal maintenance
- The targeted light wavelength of the lasers maximizes curing speed and minimizes both power consumption and heat generation
- LED Lasers last 10,000+ hours with 100% efficiency

SAATI LTS 1015

Workflow Capabilities

Resolution Settings

The SAATI LTS has five resolution resolution settings, each tailored to a different types of image requirements

847

Low Setting

- Fastest processing times
- Superior to inkjet films

1016

- Superior to inkjet/waxjet resolution

1270

Middle Setting

- Equivalent to DLE systems

1693

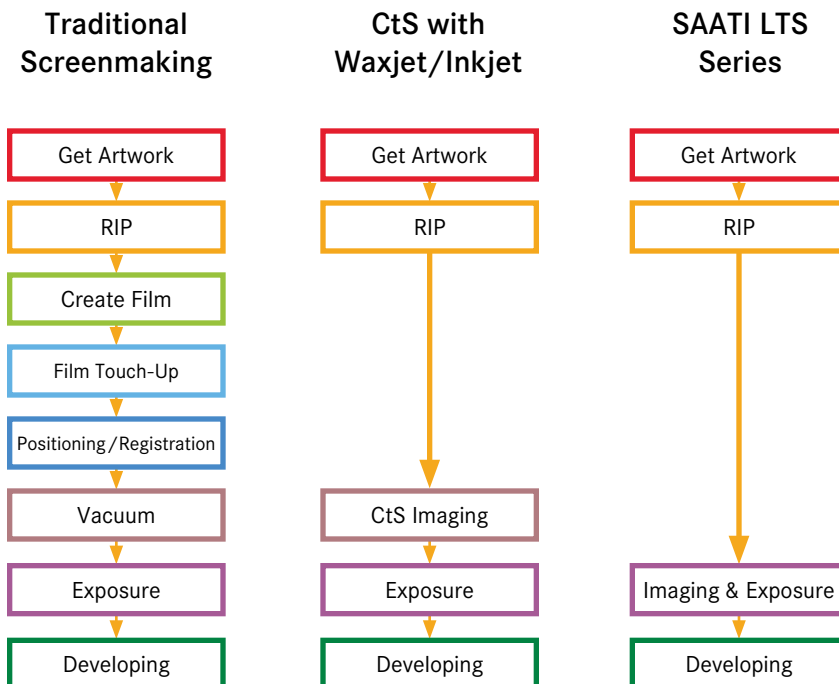
- Superior to many other DLE systems

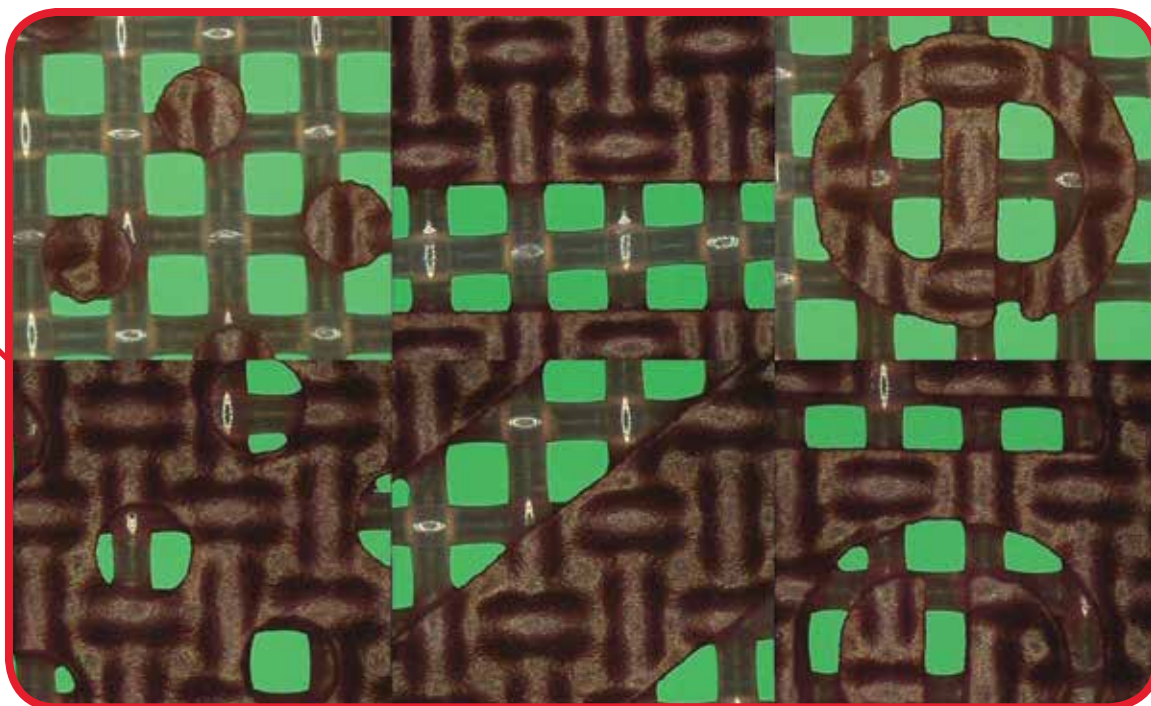
2540

Highest Setting

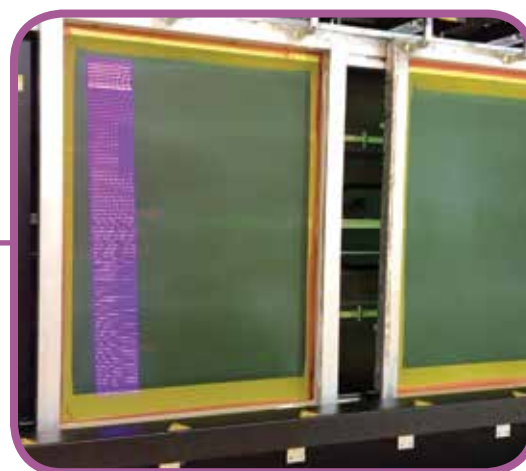
- Image setter quality for the most demanding applications

Improvements to Workflow



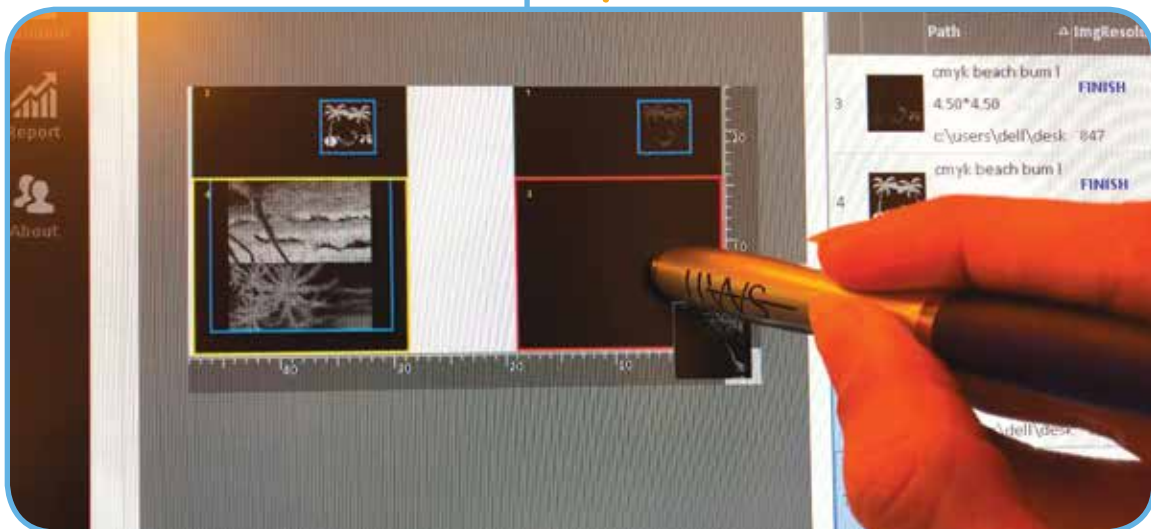
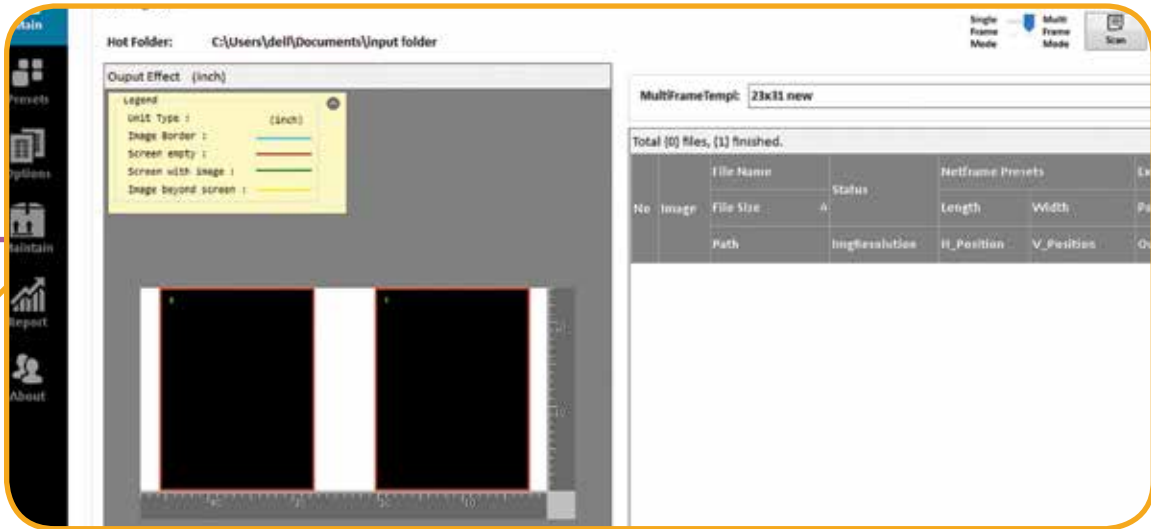


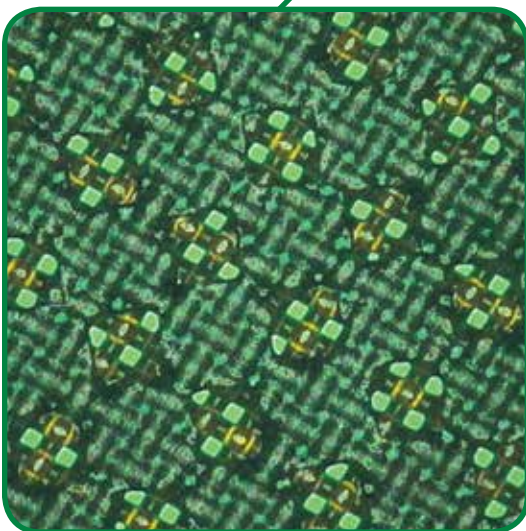
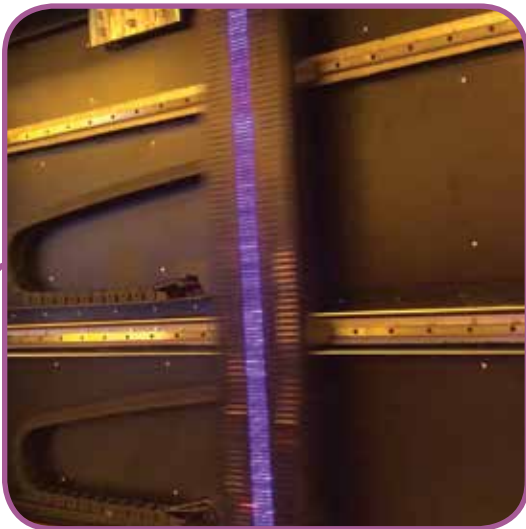
SAATI Mesh 110.80 coated with Textil PHU - 2,540 DPI setting



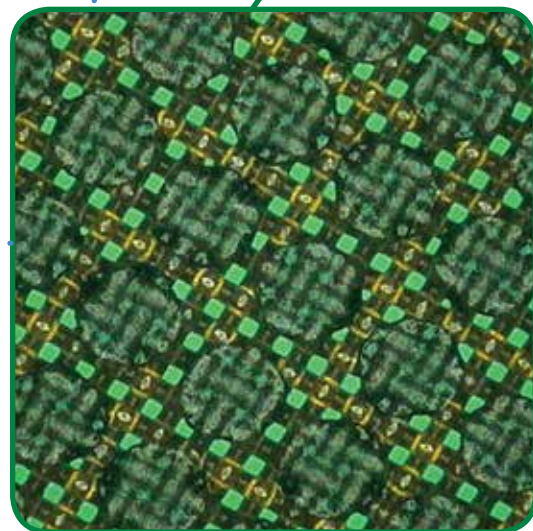
SAATI LTS 1015

Workflow Capabilities





120 LPI 40% dot on 380.31 YE



120 LPI 60% dot on 380.31 YE

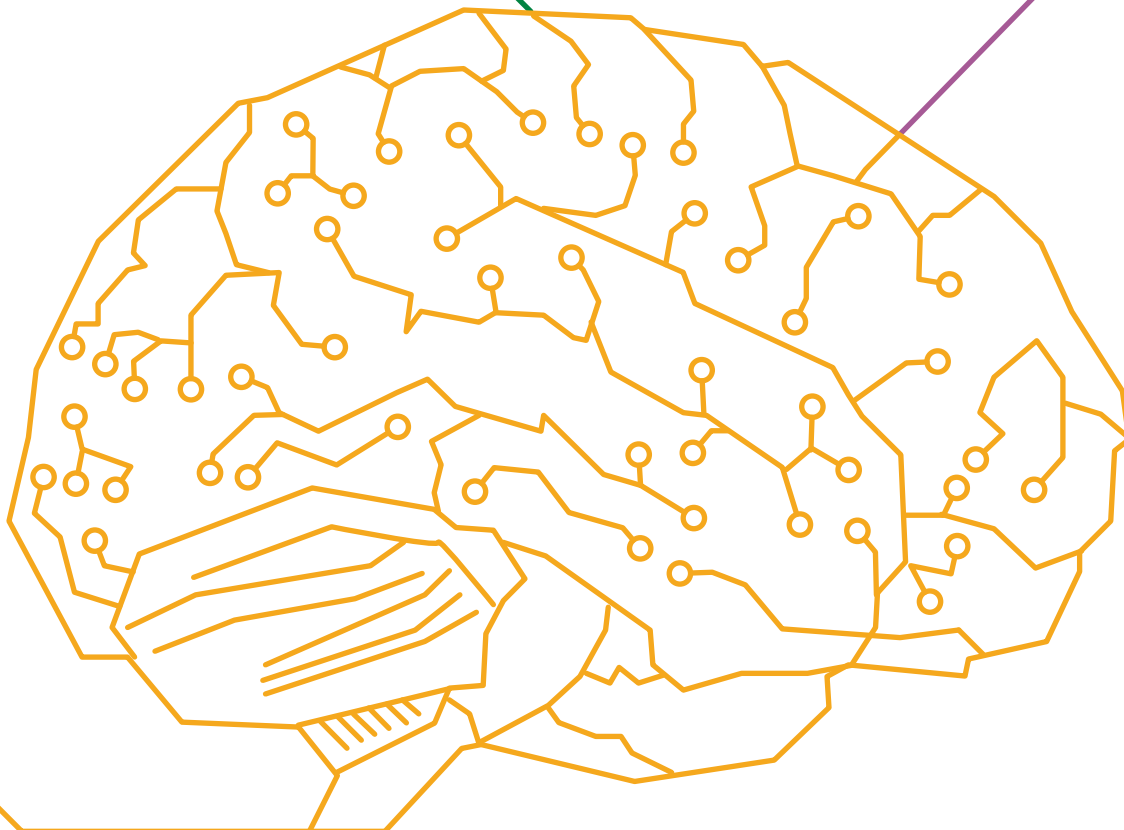
SAATI LTS 1015

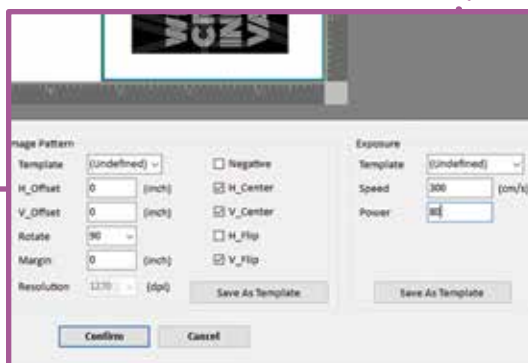
Software Capabilities



User Friendly Layout System

- Set size & location of image(s) and define exposure area
- Place multiple stencil images across 1 or more screens with touchscreen or mouse
- Finalized layouts go to queue for easy work management





Exposure System

- Set the laser power and scan speed to effectively and thoroughly cure all emulsion and film types in under 3:00
- Customize settings and/or create standard templates for future use
- Proprietary file naming system automatically loads Netframe, Image Pattern & Exposure settings (not required)

Name	Power	Speed	Resolution	Blank Length	Exposure Time	Offset
Image_001	300	300	1270	762	300	0
Image_002	300	300	1270	762	300	0
Image_003	300	300	1270	762	300	0
Image_004	300	300	1270	762	300	0
Image_005	300	300	1270	762	300	0
Image_006	300	300	1270	762	300	0
Image_007	300	300	1270	762	300	0
Image_008	300	300	1270	762	300	0
Image_009	300	300	1270	762	300	0
Image_010	300	300	1270	762	300	0
Image_011	300	300	1270	762	300	0
Image_012	300	300	1270	762	300	0
Image_013	300	300	1270	762	300	0
Image_014	300	300	1270	762	300	0
Image_015	300	300	1270	762	300	0
Image_016	300	300	1270	762	300	0
Image_017	300	300	1270	762	300	0
Image_018	300	300	1270	762	300	0
Image_019	300	300	1270	762	300	0
Image_020	300	300	1270	762	300	0
Image_021	300	300	1270	762	300	0
Image_022	300	300	1270	762	300	0
Image_023	300	300	1270	762	300	0
Image_024	300	300	1270	762	300	0
Image_025	300	300	1270	762	300	0
Image_026	300	300	1270	762	300	0
Image_027	300	300	1270	762	300	0
Image_028	300	300	1270	762	300	0
Image_029	300	300	1270	762	300	0
Image_030	300	300	1270	762	300	0
Image_031	300	300	1270	762	300	0
Image_032	300	300	1270	762	300	0
Image_033	300	300	1270	762	300	0
Image_034	300	300	1270	762	300	0
Image_035	300	300	1270	762	300	0
Image_036	300	300	1270	762	300	0
Image_037	300	300	1270	762	300	0
Image_038	300	300	1270	762	300	0
Image_039	300	300	1270	762	300	0
Image_040	300	300	1270	762	300	0
Image_041	300	300	1270	762	300	0
Image_042	300	300	1270	762	300	0
Image_043	300	300	1270	762	300	0
Image_044	300	300	1270	762	300	0
Image_045	300	300	1270	762	300	0
Image_046	300	300	1270	762	300	0
Image_047	300	300	1270	762	300	0
Image_048	300	300	1270	762	300	0
Image_049	300	300	1270	762	300	0
Image_050	300	300	1270	762	300	0

Create Your Own Archive

- Processed files settings are saved
- After screen imaging, layouts go to designated folder for archiving or deletion
- Create your own file archive for easy retrieval through the search function

SAATI LTS 1015

Technical Overview



DESCRIPTION

Self-contained, high efficiency direct laser computer to screen Image & Exposure unit, operated by included PC with optional RIP.

APPLICATIONS

Designed to efficiently image and expose screen printing frames up to a maximum size 55"x79" without vacuum or film positives.

CHARACTERISTICS

- Vertical 160 laser array capable of 2540, 1693, 1270, 1016, or 847 DPI
- Mechanical pneumatic clamp frame holder and light-safe shutter
- Mechanical raise/lower controls for top and bottom carriages
- Exposes all emulsions and stencil films
- Easy to use software, compatible with many RIP programs
- Utilizes 1-bit TIFF file format

FEATURES/BENEFITS

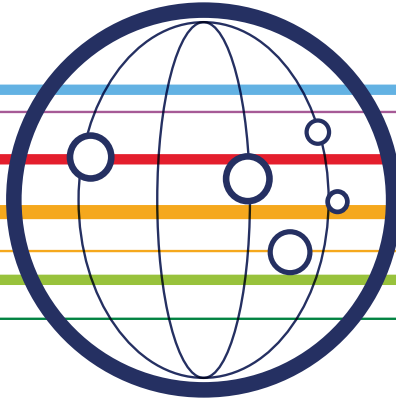
- Very high resolution CtS exposure capable of reproducing the most demanding image types
- Digitally process all types of PC & Mac design files in house with no film positives
- No consumables and low power consumption for minimized costs
- 10,000+ hour lamp life and easy, low cost maintenance

SPECIFICATIONS

- Maximum Image Size: 39" x 57"
- Maximum Frame Size: 55" x 79", also accommodates 2 screens 25 x 36
- Overall Dimensions: 101" x 27" x 81"
- Weight: 3,080 lbs.
- Compatible with 110V or 220V input
- Two Year Warranty



We cross-innovate

**SAATI S.p.a**

Via Milano, 14
22070 Appiano Gentile (Co), Italy
Tel : +39 0319711
Fax: +39 031 933392
E-mail: info.it@saati.com

SAATI Americas Corp.

201 Fairview St. Extension
Fountain Inn, SC 29644
Toll-Free: +1 800 431 2200
Fax: +1 864 862 0089
E-mail: info.us@saati.com

SAATI Technical Fabrics (Tianjin) Co., Ltd.

Cross Of Saida 2nd Branch Road and Saida Century Avenue,
Xiqing Economic Development Area,
Tianjin, China 300385
Tel: +86 22 23960843
Fax: +86 22 23962116
E-mail: info.cn@saati.com

SAATI Deutschland GmbH

Ostring 22 46348 Raesfeld, Germany
Phone: +49 2865 95800
Fax: +49 2865 958010
E-mail: info.de@saati.com

SAATI Korea Ltd.

22, Dangjeong-ro, Gunpo-si Gyeonggi-do, 435-833, Korea
Phone: +82 31 429 9337
Fax: +82 31 429 9338

SAATI France

74 Route de Bapaume 80360 Sailly Saillisel, France
Phone: +33 3 22 85 77 00
Fax: +33 3 22 85 77 00
E-mail: info.fr@saati.com

SAATI Serigrafía Ibérica, S.a.

Pol. Ind. El Mijares, C/ Industria, nº 13 12550
Almazora, Castellón, Spain
Phone: +34 964550688
Fax: +34 964551049
E-mail: info.es@saati.com

SAATI Russia

23 Shvetsova str. 198095 Saint-Petersburg, Russia
Phone: +79 062788343

Website

www.SAATI.com

—SAATI
We cross-innovate